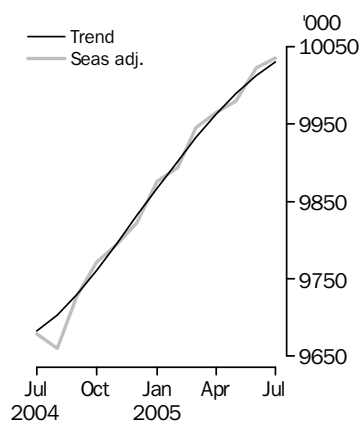


LABOUR FORCE

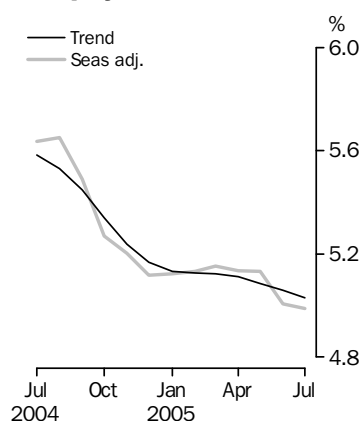
AUSTRALIA

EMBARGO: 11.30AM (CANBERRA TIME) THURS 11 AUG 2005

Employed Persons



Unemployment rate



INQUIRIES

For further information about these and related statistics, contact the National Information and Referral Service on 1300 135 070 or Michael Johnson on Canberra (02) 6252 6525.

KEY FIGURES

	Jun 2005	Jul 2005	Jun 05 to Jul 05	Jul 04 to Jul 05
Trend				
Employed persons ('000)	10 012.8	10 030.3	17.5	3.6 %
Unemployed persons ('000)	533.5	531.2	-2.3	-7.2 %
Unemployment rate (%)	5.1	5.0	0.0 pts	-0.6 pts
Participation rate (%)	64.6	64.7	0.0 pts	1.1 pts
Seasonally Adjusted				
Employed persons ('000)	10 022.2	10 034.9	12.7	3.7 %
Unemployed persons ('000)	528.2	527.0	-1.2	-8.8 %
Unemployment rate (%)	5.0	5.0	0.0 pts	-0.6 pts
Participation rate (%)	64.7	64.7	0.0 pts	1.0 pts

KEY POINTS

TREND ESTIMATES (MONTHLY CHANGE)

- EMPLOYMENT increased to 10,030,300
- UNEMPLOYMENT decreased to 531,200
- UNEMPLOYMENT RATE decreased to 5.0%
- PARTICIPATION RATE increased to 64.7%

SEASONALLY ADJUSTED ESTIMATES (MONTHLY CHANGE)

EMPLOYMENT

- increased by 12,700 to 10,034,900. Full-time employment decreased by 14,500 to 7,172,000 while part-time employment increased by 27,200 to 2,862,900.

UNEMPLOYMENT

- decreased by 1,200 to 527,000. The number of persons looking for full-time work decreased by 4,300 to 367,300 while the number of persons looking for part-time work increased by 3,100 to 159,700.

UNEMPLOYMENT RATE

- remained at 5.0%. The male unemployment rate decreased by 0.1 percentage point to 4.7% and the female unemployment rate remained at 5.3%.

PARTICIPATION RATE

- remained at 64.7%.

NOTES

FORTHCOMING ISSUES

ISSUE	RELEASE DATE
August 2005	8 September 2005
September 2005	13 October 2005
October 2005	10 November 2005
November 2005	8 December 2005
December 2005	12 January 2006
January 2006	9 February 2006

.....

ROUNDING

Estimates of monthly change shown on the front cover have been calculated using unrounded estimates, and may be different from, but are more accurate than, movements obtained from the rounded estimates. The graphs on the front cover also depict unrounded estimates.

SAMPLING ERRORS

The estimates in this publication are based on a sample survey. Because the entire population is not enumerated, the published estimates and the movements derived from them are subject to sampling variability. Standard errors give a measure of this variability and appear on pages 27 and 28.

The 95% confidence intervals below provide another way of looking at the variability inherent in estimates from sample surveys. The interval bounded by the two limits is the 95% confidence interval. A 95% confidence interval has a 95% chance of including the true value of the estimate.

MOVEMENTS IN SEASONALLY ADJUSTED SERIES BETWEEN JUNE AND JULY 2005

.....

	<u>Monthly change</u>	<u>95% Confidence interval</u>		
Total Employment	12 700	-24 900	to	50 300
Total Unemployment	-1 200	-14 200	to	11 800
Unemployment rate	0.0 pts	-0.2 pts	to	0.2 pts
Participation rate	0.0 pts	-0.2 pts	to	0.2 pts

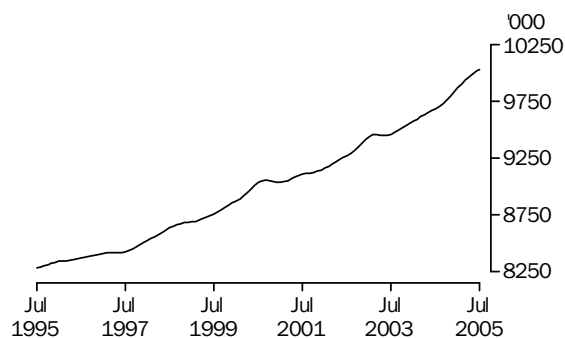
.....

Dennis Trewin
Australian Statistician

PRINCIPAL LABOUR FORCE SERIES TREND ESTIMATES

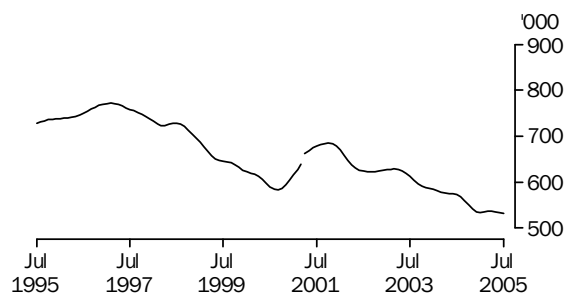
EMPLOYED PERSONS

The trend estimate of employed persons generally rose from a low of 8,283,800 in July 1995 to 9,055,900 in September 2000. The trend then fell slightly to 9,034,800 in January 2001, before rising to 9,457,600 in March 2003. The trend estimate then fell for two months, before rising to stand at 10,030,300 in July 2005.



UNEMPLOYED PERSONS

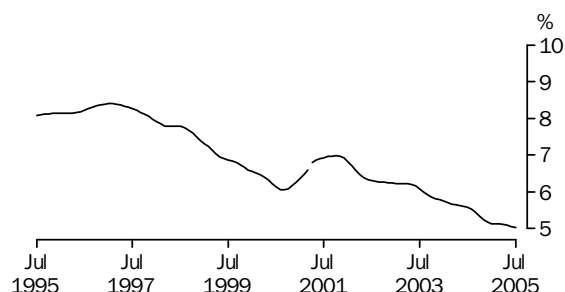
The trend estimate of unemployed persons rose from 728,100 in July 1995 to 771,800 in February 1997. The trend then fell to 583,200 in September 2000, before rising to 685,200 in October 2001. The trend has since generally fallen to stand at 531,200 in July 2005.



Series break at April 2001; see paragraph 13 of Explanatory Notes.

UNEMPLOYMENT RATE

The trend unemployment rate rose slowly from 8.1% in July 1995 to 8.4% in February 1997. After falling to 6.1% in September 2000, the trend then rose to 7.0% in October 2001. The trend has since generally fallen to stand at 5.0% in July 2005.



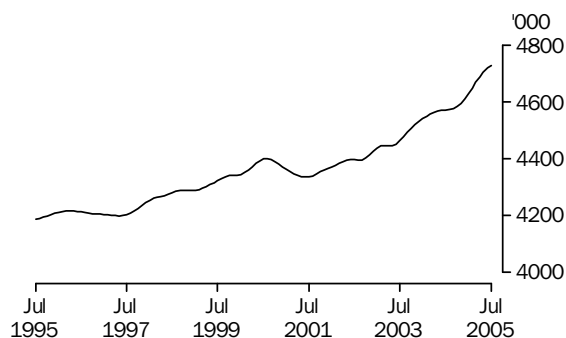
Series break at April 2001; see paragraph 13 of Explanatory Notes.

EMPLOYED PERSONS TREND ESTIMATES

MALES EMPLOYED FULL TIME

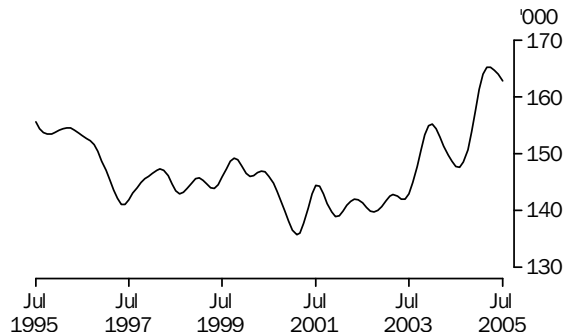
TOTAL

The trend estimate for males employed full time rose from 4,187,500 in July 1995 to 4,216,200 in April 1996. After falling to 4,198,800 in May 1997, the trend then rose to 4,400,200 in August 2000. The trend then fell to 4,335,000 in June 2001, before generally rising to stand at 4,728,200 in July 2005.



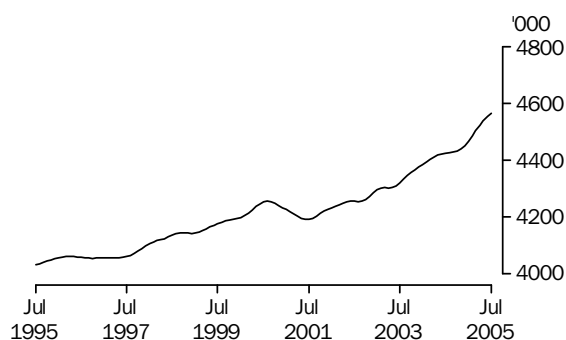
MALES AGED 15-19 YEARS

The trend estimate of males aged 15 to 19 years employed full time generally decreased from 155,600 in July 1995 to 141,100 in June 1997. Although fluctuating, the trend then fell to a low of 135,700 in February 2001 before rising to 155,200 in January 2004. After falling to 147,600 in August 2004, the trend rose to 165,200 in March 2005. The trend has fallen slightly over the last four months to stand at 162,800 in July 2005.



MALES AGED 20 YEARS AND OVER

The trend estimate of males aged 20 years and over employed full time rose gradually from 4,031,900 in July 1995 to 4,255,400 in August 2000. After falling to 4,191,600 in July 2001, the trend has generally risen to stand at 4,565,400 in July 2005.

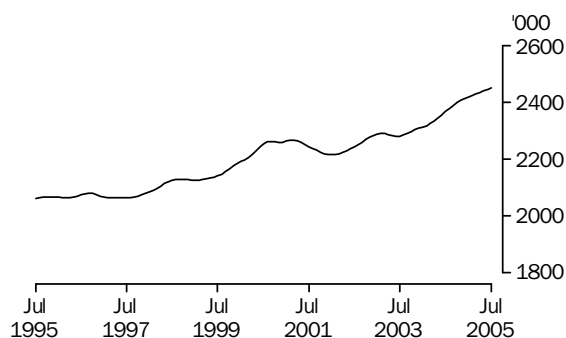


EMPLOYED PERSONS TREND ESTIMATES *continued*

FEMALES EMPLOYED FULL TIME

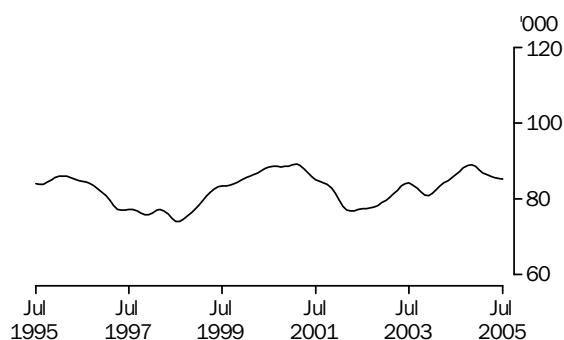
TOTAL

The trend estimate of females employed full time generally rose from 2,060,700 in July 1995 to 2,266,900 in March 2001. The trend then decreased to 2,215,400 in January 2002, before generally rising to stand at 2,449,000 in July 2005.



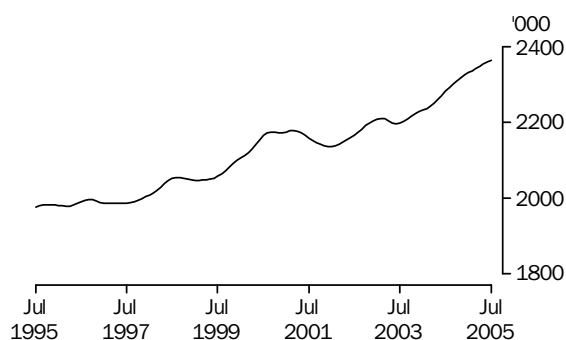
FEMALES AGED 15-19 YEARS

The trend estimate of females aged 15 to 19 years employed full time generally fell from 83,900 in July 1995 to a low of 74,000 in August 1998. The trend then rose to 89,200 in February 2001, before falling to 76,800 in April 2002. Although falling slightly in late 2003, the trend generally rose to 89,000 in November 2004, before falling to stand at 85,300 in July 2005.



FEMALES AGED 20 YEARS AND OVER

The trend estimate of females aged 20 years and over employed full time remained relatively steady from July 1995 to July 1997, before increasing to 2,178,000 in March 2001. After falling slightly to 2,135,100 in December 2001, the trend has since risen to stand at 2,363,700 in July 2005.



LABOUR FORCE STATUS (AGED 15 YEARS & OVER): Trend

	EMPLOYED			UNEMPLOYED		UNEMPLOYMENT RATE			
	Full time	Part time	Total	Looking for f/t work	Total	Labour force	Looking for f/t work	Total	Participation rate
	'000	'000	'000	'000	'000	'000	%	%	%
MALES									
July 2002	4 397.2	761.0	5 158.2	289.3	352.1	5 510.3	6.2	6.4	71.8
July 2003	4 462.4	768.1	5 230.5	275.5	335.0	5 565.5	5.8	6.0	71.4
2004									
July	4 571.7	793.9	5 365.6	250.3	311.4	5 677.0	5.2	5.5	71.5
August	4 573.3	799.2	5 372.5	246.8	309.6	5 682.1	5.1	5.4	71.5
September	4 576.8	804.9	5 381.7	242.8	306.2	5 687.9	5.0	5.4	71.5
October	4 583.7	810.2	5 393.9	238.1	301.0	5 694.9	4.9	5.3	71.5
November	4 594.5	815.0	5 409.6	233.4	295.0	5 704.5	4.8	5.2	71.6
December	4 609.3	818.4	5 427.7	229.3	289.4	5 717.1	4.7	5.1	71.7
2005									
January	4 627.7	819.7	5 447.4	226.3	285.6	5 733.0	4.7	5.0	71.8
February	4 648.3	818.7	5 467.1	224.5	283.5	5 750.6	4.6	4.9	71.9
March	4 668.7	816.5	5 485.1	223.3	282.5	5 767.7	4.6	4.9	72.1
April	4 687.4	813.4	5 500.9	222.1	281.5	5 782.3	4.5	4.9	72.2
May	4 704.0	810.2	5 514.3	220.9	280.0	5 794.3	4.5	4.8	72.2
June	4 718.2	807.2	5 525.4	219.7	278.3	5 803.7	4.4	4.8	72.3
July	4 728.2	804.5	5 532.7	218.5	276.7	5 809.4	4.4	4.8	72.3
FEMALES									
July 2002	2 243.7	1 871.1	4 114.8	172.1	271.5	4 386.3	7.1	6.2	55.2
July 2003	2 281.1	1 945.5	4 226.6	180.0	277.5	4 504.1	7.3	6.2	55.8
2004									
July	2 367.9	1 949.3	4 317.2	162.0	261.2	4 578.4	6.4	5.7	55.8
August	2 379.4	1 951.3	4 330.8	158.9	258.5	4 589.3	6.3	5.6	55.9
September	2 389.9	1 957.7	4 347.6	155.5	254.3	4 601.9	6.1	5.5	56.0
October	2 399.2	1 967.8	4 367.0	152.7	249.7	4 616.7	6.0	5.4	56.1
November	2 407.1	1 979.4	4 386.4	151.8	246.6	4 633.1	5.9	5.3	56.2
December	2 413.2	1 990.9	4 404.1	153.0	246.2	4 650.2	6.0	5.3	56.4
2005									
January	2 418.2	2 001.6	4 419.8	155.6	248.2	4 668.0	6.0	5.3	56.6
February	2 422.8	2 011.3	4 434.1	158.0	251.5	4 685.5	6.1	5.4	56.7
March	2 427.8	2 020.1	4 447.9	158.9	254.0	4 701.9	6.1	5.4	56.9
April	2 433.5	2 028.3	4 461.8	158.2	255.1	4 716.9	6.1	5.4	57.0
May	2 439.3	2 035.9	4 475.2	156.6	255.4	4 730.6	6.0	5.4	57.1
June	2 444.7	2 042.7	4 487.4	154.8	255.1	4 742.6	6.0	5.4	57.2
July	2 449.0	2 048.6	4 497.6	152.9	254.5	4 752.1	5.9	5.4	57.3
PERSONS									
July 2002	6 641.0	2 632.0	9 273.0	461.4	623.6	9 896.6	6.5	6.3	63.3
July 2003	6 743.5	2 713.5	9 457.1	455.4	612.5	10 069.5	6.3	6.1	63.4
2004									
July	6 939.6	2 743.2	9 682.8	412.3	572.5	10 255.4	5.6	5.6	63.6
August	6 952.8	2 750.5	9 703.3	405.7	568.1	10 271.4	5.5	5.5	63.6
September	6 966.7	2 762.6	9 729.3	398.2	560.5	10 289.8	5.4	5.4	63.6
October	6 982.9	2 778.0	9 760.9	390.8	550.7	10 311.6	5.3	5.3	63.7
November	7 001.6	2 794.4	9 796.0	385.2	541.6	10 337.6	5.2	5.2	63.8
December	7 022.4	2 809.3	9 831.7	382.3	535.6	10 367.4	5.2	5.2	63.9
2005									
January	7 045.9	2 821.3	9 867.2	381.9	533.9	10 401.0	5.1	5.1	64.1
February	7 071.1	2 830.1	9 901.2	382.5	535.0	10 436.1	5.1	5.1	64.2
March	7 096.5	2 836.5	9 933.0	382.2	536.5	10 469.5	5.1	5.1	64.4
April	7 120.9	2 841.7	9 962.7	380.3	536.6	10 499.3	5.1	5.1	64.5
May	7 143.3	2 846.2	9 989.5	377.6	535.4	10 524.8	5.0	5.1	64.6
June	7 162.9	2 849.9	10 012.8	374.6	533.5	10 546.3	5.0	5.1	64.6
July	7 177.3	2 853.1	10 030.3	371.4	531.2	10 561.5	4.9	5.0	64.7

LABOUR FORCE STATUS (AGED 15 YEARS & OVER): Seasonally Adjusted

	EMPLOYED			UNEMPLOYED			UNEMPLOYMENT RATE		
	Full time	Part time	Total	Looking for f/t work	Total	Labour force	Looking for f/t work	Total	Participation rate
	'000	'000	'000	'000	'000	'000	%	%	%
MALES									
July 2002	4 399.2	762.4	5 161.6	288.6	344.1	5 505.6	6.2	6.2	71.7
July 2003	4 451.4	773.6	5 225.0	277.4	339.2	5 564.2	5.9	6.1	71.4
2004									
July	4 579.9	788.1	5 368.0	251.6	309.3	5 677.3	5.2	5.4	71.7
August	4 560.9	771.8	5 332.7	246.2	312.9	5 645.6	5.1	5.5	71.1
September	4 576.3	808.5	5 384.8	248.2	312.1	5 696.9	5.1	5.5	71.7
October	4 580.5	811.5	5 392.0	231.2	298.0	5 690.0	4.8	5.2	71.5
November	4 597.0	813.4	5 410.5	235.3	294.9	5 705.3	4.9	5.2	71.6
December	4 597.8	819.9	5 417.7	228.9	287.1	5 704.9	4.7	5.0	71.5
2005									
January	4 632.7	824.9	5 457.5	228.6	284.0	5 741.5	4.7	4.9	71.9
February	4 650.6	811.6	5 462.2	220.6	282.2	5 744.4	4.5	4.9	71.8
March	4 667.8	819.5	5 487.3	221.0	282.7	5 770.0	4.5	4.9	72.1
April	4 691.5	818.6	5 510.0	224.7	282.0	5 792.1	4.6	4.9	72.3
May	4 702.3	806.8	5 509.1	224.3	285.3	5 794.4	4.6	4.9	72.2
June	4 726.5	803.9	5 530.5	219.4	276.5	5 806.9	4.4	4.8	72.3
July	4 725.3	804.6	5 529.9	215.1	272.6	5 802.5	4.4	4.7	72.2
FEMALES									
July 2002	2 233.9	1 875.7	4 109.5	165.6	267.4	4 376.9	6.9	6.1	55.1
July 2003	2 285.0	1 927.4	4 212.4	179.6	280.9	4 493.3	7.3	6.3	55.7
2004									
July	2 362.7	1 947.7	4 310.4	173.1	268.7	4 579.1	6.8	5.9	55.8
August	2 380.9	1 947.2	4 328.1	158.9	265.8	4 593.9	6.3	5.8	55.9
September	2 386.8	1 956.1	4 342.9	152.8	252.9	4 595.8	6.0	5.5	55.9
October	2 402.2	1 977.3	4 379.5	152.9	245.6	4 625.2	6.0	5.3	56.2
November	2 414.3	1 970.0	4 384.3	145.1	242.9	4 627.2	5.7	5.2	56.2
December	2 409.0	1 995.5	4 404.5	151.9	242.7	4 647.2	5.9	5.2	56.4
2005									
January	2 410.5	2 008.2	4 418.6	157.9	249.3	4 668.0	6.1	5.3	56.6
February	2 434.3	1 996.7	4 431.0	161.6	252.9	4 683.9	6.2	5.4	56.7
March	2 419.8	2 038.5	4 458.3	159.7	257.6	4 715.9	6.2	5.5	57.1
April	2 438.8	2 016.1	4 454.9	161.1	257.5	4 712.4	6.2	5.5	57.0
May	2 425.7	2 044.9	4 470.6	154.7	254.5	4 725.2	6.0	5.4	57.1
June	2 459.9	2 031.8	4 491.8	152.2	251.7	4 743.5	5.8	5.3	57.2
July	2 446.7	2 058.3	4 505.0	152.2	254.4	4 759.4	5.9	5.3	57.4
PERSONS									
July 2002	6 633.0	2 638.1	9 271.1	454.2	611.5	9 882.5	6.4	6.2	63.3
July 2003	6 736.4	2 701.0	9 437.4	457.1	620.1	10 057.5	6.4	6.2	63.4
2004									
July	6 942.7	2 735.8	9 678.5	424.7	578.0	10 256.4	5.8	5.6	63.6
August	6 941.8	2 719.0	9 660.8	405.1	578.7	10 239.5	5.5	5.7	63.4
September	6 963.2	2 764.6	9 727.7	401.0	565.0	10 292.7	5.4	5.5	63.6
October	6 982.7	2 788.9	9 771.5	384.2	543.7	10 315.2	5.2	5.3	63.7
November	7 011.3	2 783.4	9 794.8	380.4	537.7	10 332.5	5.1	5.2	63.8
December	7 006.9	2 815.4	9 822.2	380.8	529.9	10 352.1	5.2	5.1	63.8
2005									
January	7 043.1	2 833.0	9 876.2	386.5	533.3	10 409.5	5.2	5.1	64.1
February	7 084.9	2 808.2	9 893.2	382.3	535.1	10 428.3	5.1	5.1	64.2
March	7 087.6	2 858.0	9 945.6	380.7	540.3	10 485.9	5.1	5.2	64.5
April	7 130.3	2 834.7	9 964.9	385.8	539.5	10 504.4	5.1	5.1	64.5
May	7 128.1	2 851.7	9 979.7	379.0	539.8	10 519.5	5.0	5.1	64.5
June	7 186.4	2 835.8	10 022.2	371.6	528.2	10 550.4	4.9	5.0	64.7
July	7 172.0	2 862.9	10 034.9	367.3	527.0	10 561.9	4.9	5.0	64.7

LABOUR FORCE STATUS (AGED 15 YEARS & OVER): Original

	EMPLOYED			UNEMPLOYED			Civilian population aged 15 years and over	UNEMPLOYMENT RATE		Participation rate	
	Full time	Part time	Total	Looking for f/t work	Total	Labour force		Not in labour force	Looking for f/t work		Total
'000	'000	'000	'000	'000	'000	'000	'000	%	%	%	
MALES											
July 2002	4 400.1	768.7	5 168.8	271.6	319.6	5 488.4	2 186.1	7 674.5	5.8	5.8	71.5
July 2003	4 447.4	780.4	5 227.8	261.3	315.3	5 543.1	2 253.9	7 797.0	5.5	5.7	71.1
2004											
July	4 571.6	795.3	5 366.9	236.7	287.3	5 654.3	2 269.3	7 923.6	4.9	5.1	71.4
August	4 507.5	780.7	5 288.2	235.2	298.6	5 586.7	2 349.6	7 936.3	5.0	5.3	70.4
September	4 603.8	804.0	5 407.8	247.6	315.8	5 723.6	2 225.3	7 948.9	5.1	5.5	72.0
October	4 582.3	827.3	5 409.6	219.3	280.5	5 690.1	2 269.1	7 959.1	4.6	4.9	71.5
November	4 588.2	806.1	5 394.3	223.9	274.9	5 669.2	2 300.4	7 969.6	4.7	4.8	71.1
December	4 675.8	815.0	5 490.8	225.1	284.7	5 775.5	2 204.4	7 979.9	4.6	4.9	72.4
2005											
January	4 630.0	784.6	5 414.6	256.5	314.0	5 728.6	2 259.2	7 987.8	5.2	5.5	71.7
February	4 674.7	776.7	5 451.4	241.7	309.8	5 761.2	2 234.6	7 995.8	4.9	5.4	72.1
March	4 668.5	829.0	5 497.5	220.4	290.0	5 787.5	2 216.2	8 003.7	4.5	5.0	72.3
April	4 684.3	835.3	5 519.6	227.3	288.6	5 808.1	2 203.8	8 012.0	4.6	5.0	72.5
May	4 683.0	813.7	5 496.6	225.6	289.6	5 786.3	2 234.1	8 020.4	4.6	5.0	72.1
June	4 692.1	829.3	5 521.4	218.4	271.2	5 792.5	2 236.2	8 028.7	4.4	4.7	72.1
July	4 715.4	812.1	5 527.5	201.8	252.1	5 779.6	2 259.0	8 038.6	4.1	4.4	71.9
FEMALES											
July 2002	2 243.1	1 873.1	4 116.3	151.4	241.8	4 358.0	3 592.0	7 950.1	6.3	5.5	54.8
July 2003	2 289.0	1 922.8	4 211.8	166.1	256.6	4 468.5	3 604.9	8 073.4	6.8	5.7	55.3
2004											
July	2 362.6	1 940.8	4 303.4	161.4	247.4	4 550.8	3 649.0	8 199.8	6.4	5.4	55.5
August	2 335.2	1 954.6	4 289.8	148.9	251.5	4 541.3	3 670.4	8 211.7	6.0	5.5	55.3
September	2 431.6	1 963.5	4 395.1	149.8	253.8	4 648.9	3 574.7	8 223.6	5.8	5.5	56.5
October	2 400.7	1 988.5	4 389.3	141.7	230.5	4 619.7	3 611.1	8 230.8	5.6	5.0	56.1
November	2 418.9	1 973.3	4 392.2	136.4	224.1	4 616.3	3 621.9	8 238.2	5.3	4.9	56.0
December	2 468.7	1 987.6	4 456.3	154.2	243.8	4 700.1	3 545.4	8 245.5	5.9	5.2	57.0
2005											
January	2 430.9	1 919.1	4 350.0	174.7	265.2	4 615.2	3 636.4	8 251.5	6.7	5.7	55.9
February	2 459.0	1 955.7	4 414.7	185.3	291.1	4 705.8	3 551.7	8 257.5	7.0	6.2	57.0
March	2 406.8	2 056.9	4 463.7	168.6	281.5	4 745.2	3 518.4	8 263.6	6.5	5.9	57.4
April	2 409.5	2 043.8	4 453.4	160.7	257.3	4 710.6	3 561.0	8 271.6	6.3	5.5	56.9
May	2 395.3	2 077.7	4 473.0	151.9	252.6	4 725.6	3 554.2	8 279.8	6.0	5.3	57.1
June	2 421.2	2 075.9	4 497.2	149.6	243.0	4 740.1	3 547.7	8 287.8	5.8	5.1	57.2
July	2 445.1	2 048.9	4 494.0	142.5	235.0	4 729.0	3 568.7	8 297.7	5.5	5.0	57.0
PERSONS											
July 2002	6 643.2	2 641.8	9 285.0	422.9	561.4	9 846.4	5 778.1	15 624.5	6.0	5.7	63.0
July 2003	6 736.4	2 703.2	9 439.6	427.4	572.0	10 011.6	5 858.8	15 870.4	6.0	5.7	63.1
2004											
July	6 934.2	2 736.2	9 670.4	398.0	534.7	10 205.1	5 918.3	16 123.4	5.4	5.2	63.3
August	6 842.7	2 735.3	9 578.0	384.1	550.1	10 128.1	6 020.0	16 148.0	5.3	5.4	62.7
September	7 035.4	2 767.5	9 802.9	397.3	569.6	10 372.5	5 800.0	16 172.4	5.3	5.5	64.1
October	6 983.0	2 815.8	9 798.8	361.0	511.0	10 309.8	5 880.2	16 190.0	4.9	5.0	63.7
November	7 007.1	2 779.4	9 786.5	360.3	499.0	10 285.5	5 922.3	16 207.8	4.9	4.9	63.5
December	7 144.5	2 802.6	9 947.1	379.3	528.6	10 475.6	5 749.7	16 225.4	5.0	5.0	64.6
2005											
January	7 060.9	2 703.7	9 764.6	431.2	579.2	10 343.7	5 895.6	16 239.3	5.8	5.6	63.7
February	7 133.7	2 732.3	9 866.0	427.0	600.9	10 467.0	5 786.3	16 253.3	5.6	5.7	64.4
March	7 075.3	2 885.9	9 961.2	389.0	571.4	10 532.6	5 734.6	16 267.2	5.2	5.4	64.7
April	7 093.8	2 879.1	9 972.9	388.1	545.8	10 518.8	5 764.8	16 283.6	5.2	5.2	64.6
May	7 078.2	2 891.4	9 969.7	377.5	542.2	10 511.9	5 788.3	16 300.2	5.1	5.2	64.5
June	7 113.3	2 905.2	10 018.5	368.0	514.1	10 532.6	5 783.9	16 316.6	4.9	4.9	64.6
July	7 160.6	2 861.0	10 021.6	344.3	487.1	10 508.7	5 827.7	16 336.3	4.6	4.6	64.3

LABOUR FORCE STATUS (AGED 15 YEARS & OVER)—New South Wales

	TREND					SEASONALLY ADJUSTED					Civilian population aged 15 years and over
	Employed full time	Total employed	Total unemp- loyed	Unemp- loyment rate	Partici- pation rate	Employed full time	Total employed	Total unemp- loyed	Unemp- loyment rate	Partici- pation rate	
	'000	'000	'000	%	%	'000	'000	'000	%	%	'000
MALES											
July 2002	1 486.2	1 731.8	112.5	6.1	71.0	1 491.4	1 731.8	112.6	6.1	71.0	2 598.7
July 2003	1 496.8	1 739.6	110.4	6.0	70.4	1 488.4	1 726.2	114.1	6.2	70.0	2 627.4
2004											
July	1 511.7	1 774.8	97.0	5.2	70.2	1 514.3	1 775.5	96.2	5.1	70.5	2 656.5
August	1 508.9	1 774.2	96.7	5.2	70.1	1 496.7	1 743.0	98.5	5.4	69.2	2 659.8
September	1 506.6	1 774.3	96.2	5.1	70.0	1 515.4	1 780.1	98.8	5.3	70.6	2 663.2
October	1 505.2	1 775.0	95.4	5.1	70.0	1 498.3	1 763.0	91.2	4.9	69.6	2 665.5
November	1 505.2	1 776.7	94.7	5.1	70.1	1 502.4	1 779.7	96.8	5.2	70.3	2 668.0
December	1 507.0	1 779.6	94.4	5.0	70.2	1 510.6	1 781.5	93.2	5.0	70.2	2 670.3
2005											
January	1 511.7	1 783.9	94.9	5.0	70.3	1 510.1	1 787.4	94.3	5.0	70.4	2 672.1
February	1 518.8	1 788.4	95.7	5.1	70.5	1 518.5	1 784.7	95.6	5.1	70.3	2 673.9
March	1 527.0	1 792.3	96.4	5.1	70.6	1 519.0	1 783.3	96.3	5.1	70.2	2 675.6
April	1 534.8	1 795.0	96.4	5.1	70.7	1 542.3	1 809.7	96.8	5.1	71.2	2 677.1
May	1 541.4	1 796.9	96.0	5.1	70.7	1 542.6	1 795.8	99.2	5.2	70.7	2 678.6
June	1 546.7	1 798.0	95.1	5.0	70.6	1 556.6	1 799.5	96.1	5.1	70.7	2 680.1
July	1 550.7	1 798.1	94.0	5.0	70.6	1 540.4	1 791.3	88.6	4.7	70.1	2 682.6
FEMALES											
July 2002	773.8	1 356.9	85.6	5.9	53.7	774.2	1 365.9	88.1	6.1	54.1	2 686.3
July 2003	781.6	1 397.9	87.6	5.9	54.7	778.4	1 391.1	89.7	6.1	54.5	2 715.5
2004											
July	800.9	1 411.9	86.3	5.8	54.6	798.1	1 407.0	90.6	6.1	54.6	2 745.2
August	805.1	1 411.6	84.4	5.6	54.4	805.6	1 408.2	87.5	5.8	54.4	2 748.3
September	809.2	1 413.7	82.0	5.5	54.4	816.5	1 419.5	72.6	4.9	54.2	2 751.4
October	812.0	1 417.9	80.4	5.4	54.4	814.4	1 418.9	83.8	5.6	54.6	2 752.9
November	812.8	1 423.2	80.3	5.3	54.6	809.3	1 420.2	78.9	5.3	54.4	2 754.4
December	811.6	1 428.0	81.4	5.4	54.8	810.0	1 426.2	80.9	5.4	54.7	2 755.8
2005											
January	809.6	1 431.9	82.8	5.5	54.9	807.5	1 436.0	81.5	5.4	55.0	2 757.0
February	807.8	1 435.6	83.7	5.5	55.1	819.8	1 435.5	83.3	5.5	55.1	2 758.3
March	806.8	1 439.5	83.2	5.5	55.2	793.8	1 443.9	92.4	6.0	55.7	2 759.5
April	806.1	1 443.8	81.9	5.4	55.2	810.0	1 439.5	78.1	5.1	55.0	2 761.4
May	805.7	1 448.5	80.1	5.2	55.3	798.3	1 441.3	78.3	5.2	55.0	2 763.3
June	805.4	1 453.5	78.2	5.1	55.4	818.5	1 455.5	78.2	5.1	55.5	2 765.2
July	805.2	1 458.0	76.4	5.0	55.5	799.4	1 467.6	75.0	4.9	55.7	2 767.9
PERSONS											
July 2002	2 260.0	3 088.7	198.1	6.0	62.2	2 265.6	3 097.6	200.7	6.1	62.4	5 285.0
July 2003	2 278.4	3 137.4	197.9	5.9	62.4	2 266.8	3 117.3	203.8	6.1	62.2	5 342.9
2004											
July	2 312.6	3 186.7	183.3	5.4	62.3	2 312.4	3 182.5	186.8	5.5	62.4	5 401.6
August	2 314.0	3 185.7	181.1	5.4	62.1	2 302.3	3 151.2	186.0	5.6	61.7	5 408.1
September	2 315.8	3 187.9	178.1	5.3	62.1	2 331.9	3 199.6	171.5	5.1	62.3	5 414.5
October	2 317.2	3 192.9	175.8	5.2	62.1	2 312.8	3 181.9	175.0	5.2	62.0	5 418.4
November	2 318.0	3 199.8	175.1	5.2	62.2	2 311.7	3 199.9	175.7	5.2	62.3	5 422.3
December	2 318.6	3 207.6	175.8	5.2	62.4	2 320.6	3 207.7	174.1	5.1	62.3	5 426.2
2005											
January	2 321.3	3 215.8	177.7	5.2	62.5	2 317.6	3 223.4	175.8	5.2	62.6	5 429.1
February	2 326.7	3 224.0	179.4	5.3	62.7	2 338.3	3 220.1	178.9	5.3	62.6	5 432.1
March	2 333.8	3 231.8	179.6	5.3	62.8	2 312.8	3 227.1	188.7	5.5	62.8	5 435.1
April	2 340.9	3 238.8	178.3	5.2	62.8	2 352.3	3 249.2	174.9	5.1	63.0	5 438.5
May	2 347.1	3 245.5	176.1	5.1	62.9	2 340.9	3 237.1	177.5	5.2	62.7	5 441.9
June	2 352.1	3 251.5	173.4	5.1	62.9	2 375.1	3 255.0	174.3	5.1	63.0	5 445.3
July	2 355.8	3 256.2	170.4	5.0	62.9	2 339.8	3 258.8	163.7	4.8	62.8	5 450.5

LABOUR FORCE STATUS (AGED 15 YEARS & OVER)—Victoria

	TREND					SEASONALLY ADJUSTED					Civilian population aged 15 years and over
	Employed full time	Total employed	Total unemp- loyed	Unemp- loyment rate	Partici- pation rate	Employed full time	Total employed	Total unemp- loyed	Unemp- loyment rate	Partici- pation rate	
	'000	'000	'000	%	%	'000	'000	'000	%	%	
MALES											
July 2002	1 095.9	1 280.4	81.4	6.0	71.7	1 095.8	1 279.5	77.5	5.7	71.5	1 898.6
July 2003	1 104.3	1 299.2	77.4	5.6	71.4	1 103.9	1 299.8	81.7	5.9	71.6	1 928.7
2004											
July	1 133.9	1 332.8	83.3	5.9	72.2	1 132.7	1 332.9	81.7	5.8	72.1	1 961.0
August	1 135.3	1 334.8	84.1	5.9	72.2	1 140.9	1 335.8	83.0	5.8	72.2	1 964.1
September	1 136.9	1 337.1	84.0	5.9	72.3	1 133.8	1 338.3	87.2	6.1	72.5	1 967.1
October	1 138.6	1 339.6	83.3	5.9	72.2	1 135.7	1 339.4	84.6	5.9	72.3	1 969.5
November	1 140.5	1 342.6	82.0	5.8	72.2	1 143.0	1 340.3	81.7	5.7	72.1	1 972.0
December	1 142.7	1 346.1	80.3	5.6	72.3	1 140.8	1 347.1	78.8	5.5	72.2	1 974.4
2005											
January	1 145.3	1 350.3	78.6	5.5	72.3	1 150.6	1 350.8	76.8	5.4	72.2	1 976.1
February	1 148.5	1 355.4	77.0	5.4	72.4	1 144.2	1 353.6	78.3	5.5	72.4	1 977.8
March	1 152.1	1 360.9	75.7	5.3	72.6	1 150.7	1 360.7	76.6	5.3	72.6	1 979.5
April	1 156.1	1 366.4	74.5	5.2	72.7	1 158.1	1 367.9	74.0	5.1	72.8	1 982.0
May	1 160.4	1 371.6	73.3	5.1	72.8	1 159.4	1 370.8	73.4	5.1	72.8	1 984.5
June	1 164.6	1 376.3	72.2	5.0	72.9	1 163.2	1 378.0	71.3	4.9	72.9	1 987.1
July	1 168.0	1 380.1	71.3	4.9	73.0	1 173.3	1 381.2	71.2	4.9	73.0	1 989.3
FEMALES											
July 2002	561.5	1 033.9	62.3	5.7	54.9	556.8	1 032.5	55.4	5.1	54.5	1 996.8
July 2003	555.8	1 049.9	67.4	6.0	55.1	560.4	1 049.1	64.1	5.8	54.9	2 027.2
2004											
July	587.4	1 075.0	66.4	5.8	55.4	583.5	1 078.2	67.1	5.9	55.6	2 059.1
August	586.0	1 079.4	68.2	5.9	55.7	588.2	1 076.9	74.5	6.5	55.8	2 062.1
September	584.7	1 085.6	69.4	6.0	55.9	578.6	1 081.5	69.4	6.0	55.7	2 065.1
October	584.6	1 092.8	69.3	6.0	56.2	579.8	1 093.1	68.1	5.9	56.2	2 066.8
November	586.0	1 099.5	68.2	5.8	56.5	591.2	1 101.4	67.1	5.7	56.5	2 068.5
December	588.4	1 104.7	66.9	5.7	56.6	590.2	1 108.1	67.4	5.7	56.8	2 070.1
2005											
January	591.3	1 108.7	66.2	5.6	56.7	588.8	1 110.1	66.0	5.6	56.8	2 071.5
February	593.8	1 110.9	66.3	5.6	56.8	595.0	1 110.7	65.7	5.6	56.8	2 072.8
March	595.7	1 111.3	66.8	5.7	56.8	597.1	1 107.3	65.0	5.5	56.5	2 074.1
April	597.0	1 110.8	67.5	5.7	56.7	592.9	1 108.4	69.7	5.9	56.7	2 076.3
May	598.1	1 109.7	68.3	5.8	56.7	602.3	1 117.9	69.2	5.8	57.1	2 078.5
June	598.8	1 107.9	69.1	5.9	56.6	601.8	1 114.3	66.4	5.6	56.7	2 080.7
July	599.1	1 105.8	69.8	5.9	56.5	594.0	1 092.4	71.9	6.2	55.9	2 083.0
PERSONS											
July 2002	1 657.4	2 314.3	143.7	5.8	63.1	1 652.6	2 312.0	132.9	5.4	62.8	3 895.4
July 2003	1 660.1	2 349.1	144.8	5.8	63.0	1 664.3	2 349.0	145.8	5.8	63.1	3 955.9
2004											
July	1 721.3	2 407.7	149.7	5.9	63.6	1 716.2	2 411.1	148.8	5.8	63.7	4 020.2
August	1 721.3	2 414.2	152.3	5.9	63.7	1 729.1	2 412.7	157.5	6.1	63.8	4 026.2
September	1 721.6	2 422.7	153.4	6.0	63.9	1 712.4	2 419.8	156.6	6.1	63.9	4 032.2
October	1 723.1	2 432.5	152.6	5.9	64.0	1 715.5	2 432.6	152.7	5.9	64.0	4 036.3
November	1 726.5	2 442.1	150.2	5.8	64.2	1 734.1	2 441.7	148.8	5.7	64.1	4 040.4
December	1 731.2	2 450.7	147.3	5.7	64.2	1 730.9	2 455.2	146.2	5.6	64.3	4 044.5
2005											
January	1 736.7	2 459.0	144.8	5.6	64.3	1 739.4	2 461.0	142.9	5.5	64.3	4 047.5
February	1 742.3	2 466.2	143.3	5.5	64.4	1 739.3	2 464.3	144.0	5.5	64.4	4 050.6
March	1 747.8	2 472.2	142.5	5.5	64.5	1 747.8	2 468.1	141.5	5.4	64.4	4 053.6
April	1 753.1	2 477.3	142.0	5.4	64.5	1 751.0	2 476.3	143.7	5.5	64.6	4 058.3
May	1 758.5	2 481.3	141.6	5.4	64.6	1 761.6	2 488.6	142.6	5.4	64.8	4 063.1
June	1 763.4	2 484.2	141.2	5.4	64.6	1 765.1	2 492.3	137.7	5.2	64.7	4 067.8
July	1 767.1	2 485.9	141.1	5.4	64.5	1 767.4	2 473.6	143.1	5.5	64.3	4 072.3

LABOUR FORCE STATUS (AGED 15 YEARS & OVER)—Queensland

	TREND					SEASONALLY ADJUSTED					Civilian population aged 15 years and over
	Employed full time	Total employed	Total unemp- loyed	Unemp- loyment rate	Partici- pation rate	Employed full time	Total employed	Total unemp- loyed	Unemp- loyment rate	Partici- pation rate	
	'000	'000	'000	%	%	'000	'000	'000	%	%	
MALES											
July 2002	828.5	977.9	71.7	6.8	72.8	827.6	981.3	68.7	6.5	72.9	1 441.2
July 2003	842.4	993.5	69.5	6.5	71.8	840.4	992.4	69.8	6.6	71.8	1 480.3
2004											
July	900.4	1 048.1	59.1	5.3	72.9	903.6	1 046.2	61.8	5.6	72.9	1 519.0
August	903.9	1 052.8	57.4	5.2	72.9	899.9	1 050.0	57.6	5.2	72.7	1 522.7
September	906.5	1 057.1	55.8	5.0	72.9	907.3	1 062.5	55.0	4.9	73.2	1 526.3
October	908.7	1 061.3	53.8	4.8	72.9	916.8	1 066.0	50.6	4.5	73.0	1 529.7
November	911.1	1 065.8	51.5	4.6	72.9	913.1	1 063.0	53.1	4.8	72.8	1 533.3
December	914.0	1 070.6	49.7	4.4	72.9	901.7	1 064.8	51.7	4.6	72.7	1 536.7
2005											
January	917.6	1 075.5	48.6	4.3	73.0	916.9	1 075.7	51.0	4.5	73.2	1 539.5
February	922.3	1 080.7	48.2	4.3	73.2	925.0	1 078.4	43.7	3.9	72.7	1 542.3
March	927.7	1 085.6	48.2	4.3	73.4	934.7	1 094.6	44.0	3.9	73.7	1 545.1
April	933.2	1 089.8	48.5	4.3	73.5	930.3	1 092.4	50.0	4.4	73.8	1 547.6
May	938.1	1 093.0	48.9	4.3	73.7	933.2	1 083.8	57.8	5.1	73.6	1 550.2
June	942.4	1 095.7	49.2	4.3	73.7	945.5	1 098.6	43.7	3.8	73.6	1 552.7
July	945.2	1 097.4	49.3	4.3	73.8	947.5	1 098.4	48.6	4.2	73.7	1 555.5
FEMALES											
July 2002	424.3	775.7	68.1	8.1	56.9	422.3	766.2	69.3	8.3	56.4	1 481.6
July 2003	437.1	816.4	61.5	7.0	57.7	435.3	813.6	62.9	7.2	57.6	1 521.8
2004											
July	466.1	846.1	52.7	5.9	57.6	467.8	842.0	52.2	5.8	57.3	1 560.7
August	473.4	852.8	51.5	5.7	57.8	471.8	850.3	51.7	5.7	57.7	1 564.0
September	480.0	859.1	50.4	5.5	58.0	482.0	856.9	52.3	5.8	58.0	1 567.3
October	485.3	865.3	49.3	5.4	58.3	484.4	873.8	40.8	4.5	58.3	1 570.0
November	488.7	871.3	48.2	5.2	58.5	494.1	870.9	47.2	5.1	58.4	1 572.8
December	490.0	876.9	47.6	5.1	58.7	489.2	873.0	46.2	5.0	58.3	1 575.5
2005											
January	489.8	881.5	47.5	5.1	58.9	487.2	880.6	49.5	5.3	59.0	1 577.8
February	489.0	885.1	48.2	5.2	59.1	491.2	882.5	48.3	5.2	58.9	1 580.2
March	488.7	888.2	49.5	5.3	59.2	486.9	898.7	45.7	4.8	59.7	1 582.5
April	489.4	891.1	51.0	5.4	59.4	490.5	888.7	53.4	5.7	59.4	1 584.9
May	490.9	893.6	52.4	5.5	59.6	483.1	889.1	52.5	5.6	59.3	1 587.3
June	492.7	895.8	53.8	5.7	59.7	498.0	893.4	54.0	5.7	59.6	1 589.6
July	494.5	897.5	54.9	5.8	59.9	497.6	902.5	55.6	5.8	60.2	1 592.4
PERSONS											
July 2002	1 252.8	1 753.7	139.7	7.4	64.8	1 249.9	1 747.5	137.9	7.3	64.5	2 922.8
July 2003	1 279.5	1 809.9	131.1	6.8	64.7	1 275.7	1 806.0	132.8	6.8	64.6	3 002.1
2004											
July	1 366.5	1 894.2	111.8	5.6	65.1	1 371.5	1 888.3	114.0	5.7	65.0	3 079.7
August	1 377.3	1 905.5	109.0	5.4	65.3	1 371.7	1 900.4	109.3	5.4	65.1	3 086.8
September	1 386.5	1 916.2	106.2	5.3	65.4	1 389.3	1 919.4	107.3	5.3	65.5	3 093.6
October	1 394.0	1 926.6	103.1	5.1	65.5	1 401.2	1 939.8	91.5	4.5	65.5	3 099.7
November	1 399.9	1 937.2	99.8	4.9	65.6	1 407.2	1 933.9	100.4	4.9	65.5	3 106.1
December	1 404.0	1 947.5	97.3	4.8	65.7	1 390.9	1 937.8	97.9	4.8	65.4	3 112.2
2005											
January	1 407.4	1 957.1	96.1	4.7	65.9	1 404.1	1 956.4	100.5	4.9	66.0	3 117.4
February	1 411.4	1 965.8	96.4	4.7	66.0	1 416.2	1 960.9	92.0	4.5	65.7	3 122.5
March	1 416.5	1 973.8	97.7	4.7	66.2	1 421.6	1 993.3	89.8	4.3	66.6	3 127.7
April	1 422.7	1 980.9	99.5	4.8	66.4	1 420.9	1 981.1	103.4	5.0	66.5	3 132.5
May	1 428.9	1 986.6	101.3	4.9	66.5	1 416.3	1 972.9	110.4	5.3	66.4	3 137.5
June	1 435.1	1 991.5	103.0	4.9	66.7	1 443.5	1 992.0	97.7	4.7	66.5	3 142.3
July	1 439.8	1 994.9	104.2	5.0	66.7	1 445.1	2 000.9	104.2	4.9	66.9	3 147.9

LABOUR FORCE STATUS (AGED 15 YEARS & OVER)—South Australia

	TREND					SEASONALLY ADJUSTED					Civilian population aged 15 years and over
	Employed full time	Total employed	Total unemp- loyed	Unemp- loyment rate	Partici- pation rate	Employed full time	Total employed	Total unemp- loyed	Unemp- loyment rate	Partici- pation rate	
	'000	'000	'000	%	%	'000	'000	'000	%	%	
MALES											
July 2002	324.5	384.4	29.2	7.1	68.8	325.2	383.3	28.6	6.9	68.5	601.0
July 2003	338.9	396.8	26.9	6.4	69.8	340.7	398.5	27.0	6.3	70.1	606.8
2004											
July	334.6	399.4	27.8	6.5	69.7	334.1	399.9	27.2	6.4	69.7	612.7
August	334.6	400.1	27.0	6.3	69.7	333.8	398.7	27.9	6.5	69.6	613.2
September	334.9	400.6	26.1	6.1	69.5	333.7	398.9	27.4	6.4	69.5	613.7
October	335.6	400.9	25.3	5.9	69.4	337.6	403.0	25.6	6.0	69.8	614.1
November	336.6	401.1	24.8	5.8	69.3	337.6	402.6	21.9	5.2	69.1	614.4
December	338.1	401.6	24.3	5.7	69.3	338.1	402.3	23.1	5.4	69.2	614.8
2005											
January	339.9	402.5	24.0	5.6	69.3	335.0	397.8	26.7	6.3	69.0	615.1
February	341.6	403.5	23.6	5.5	69.4	342.7	403.3	24.5	5.7	69.5	615.4
March	342.9	404.6	23.0	5.4	69.4	346.9	407.1	23.0	5.3	69.8	615.8
April	343.7	405.6	22.3	5.2	69.5	343.4	406.0	21.1	4.9	69.3	616.2
May	343.8	406.4	21.7	5.1	69.4	344.9	407.3	21.1	4.9	69.5	616.6
June	343.5	406.8	21.1	4.9	69.4	342.5	406.3	21.1	4.9	69.3	617.0
July	343.0	407.1	20.7	4.8	69.3	340.3	405.4	21.8	5.1	69.2	617.4
FEMALES											
July 2002	150.8	310.4	20.4	6.2	52.8	148.6	307.1	20.1	6.1	52.2	626.4
July 2003	165.0	322.8	20.6	6.0	54.4	166.8	322.1	20.8	6.1	54.3	631.3
2004											
July	160.8	321.0	19.7	5.8	53.5	160.3	320.5	21.0	6.2	53.7	636.4
August	161.7	321.5	19.5	5.7	53.5	162.1	323.6	19.3	5.6	53.9	636.9
September	162.6	322.5	18.9	5.5	53.6	161.3	322.7	18.2	5.3	53.5	637.3
October	163.6	324.0	18.2	5.3	53.7	163.9	322.5	18.9	5.5	53.6	637.5
November	164.6	325.7	17.6	5.1	53.8	165.4	324.2	17.0	5.0	53.5	637.7
December	165.5	327.5	17.3	5.0	54.0	164.1	328.3	16.8	4.9	54.1	638.0
2005											
January	166.4	329.2	17.4	5.0	54.3	168.6	330.2	17.5	5.0	54.5	638.1
February	167.0	330.8	17.6	5.1	54.6	165.9	332.1	17.0	4.9	54.7	638.2
March	167.6	332.2	17.8	5.1	54.8	167.5	331.8	17.7	5.1	54.8	638.4
April	168.1	333.4	17.7	5.0	55.0	168.2	332.0	19.5	5.5	55.0	638.7
May	168.6	334.6	17.4	4.9	55.1	168.9	334.6	17.2	4.9	55.1	639.0
June	169.2	335.8	16.9	4.8	55.2	168.6	335.6	17.7	5.0	55.3	639.3
July	169.4	336.8	16.3	4.6	55.2	170.2	338.5	14.0	4.0	55.1	639.7
PERSONS											
July 2002	475.3	694.7	49.7	6.7	60.6	473.7	690.4	48.7	6.6	60.2	1 227.4
July 2003	503.9	719.6	47.5	6.2	62.0	507.5	720.6	47.8	6.2	62.1	1 238.0
2004											
July	495.3	720.4	47.4	6.2	61.5	494.5	720.4	48.3	6.3	61.5	1 249.1
August	496.3	721.7	46.5	6.1	61.5	495.9	722.3	47.2	6.1	61.6	1 250.0
September	497.6	723.1	45.1	5.9	61.4	495.0	721.6	45.6	5.9	61.3	1 251.0
October	499.3	724.8	43.5	5.7	61.4	501.4	725.5	44.5	5.8	61.5	1 251.6
November	501.3	726.8	42.3	5.5	61.4	502.9	726.8	38.9	5.1	61.1	1 252.2
December	503.6	729.1	41.6	5.4	61.5	502.2	730.7	39.9	5.2	61.5	1 252.8
2005											
January	506.3	731.7	41.3	5.3	61.7	503.7	728.0	44.3	5.7	61.6	1 253.2
February	508.7	734.3	41.2	5.3	61.9	508.5	735.4	41.5	5.3	62.0	1 253.7
March	510.5	736.8	40.8	5.2	62.0	514.4	738.9	40.7	5.2	62.2	1 254.1
April	511.8	739.0	40.1	5.1	62.1	511.6	738.0	40.6	5.2	62.0	1 254.9
May	512.5	740.9	39.1	5.0	62.1	513.9	741.9	38.3	4.9	62.1	1 255.6
June	512.7	742.5	38.0	4.9	62.1	511.2	741.9	38.7	5.0	62.1	1 256.3
July	512.5	743.9	37.0	4.7	62.1	510.5	743.9	35.8	4.6	62.0	1 257.1

LABOUR FORCE STATUS (AGED 15 YEARS & OVER)—Western Australia

	TREND					SEASONALLY ADJUSTED					Civilian population aged 15 years and over
	Employed full time	Total employed	Total unemp- loyed	Unemp- loyment rate	Partici- pation rate	Employed full time	Total employed	Total unemp- loyed	Unemp- loyment rate	Partici- pation rate	
	'000	'000	'000	%	%	'000	'000	'000	%	%	
MALES											
July 2002	447.0	530.2	39.0	6.9	75.2	445.1	527.8	39.8	7.0	75.0	756.5
July 2003	465.2	544.6	34.0	5.9	75.0	462.6	545.9	33.0	5.7	75.1	771.2
2004											
July	470.9	551.1	26.6	4.6	73.4	472.0	549.2	26.4	4.6	73.1	787.5
August	471.6	552.2	26.1	4.5	73.3	470.4	549.1	26.7	4.6	73.0	789.1
September	473.3	554.7	25.6	4.4	73.4	470.4	553.8	24.0	4.2	73.1	790.8
October	476.4	558.5	25.2	4.3	73.7	477.6	560.7	27.3	4.6	74.2	792.0
November	480.4	562.9	25.0	4.3	74.1	480.7	565.4	23.8	4.0	74.3	793.2
December	485.0	567.4	24.9	4.2	74.6	482.9	565.0	25.5	4.3	74.3	794.4
2005											
January	489.6	571.5	25.0	4.2	75.0	492.7	572.4	24.1	4.0	75.0	795.2
February	493.5	575.1	25.3	4.2	75.4	492.4	573.3	25.1	4.2	75.2	796.1
March	496.2	578.1	25.7	4.3	75.7	496.9	580.6	27.2	4.5	76.3	797.0
April	498.2	580.7	26.3	4.3	76.1	500.0	580.4	25.6	4.2	75.9	798.1
May	499.7	582.9	26.9	4.4	76.3	503.3	585.9	25.4	4.2	76.5	799.1
June	500.9	584.6	27.5	4.5	76.5	492.8	580.9	29.2	4.8	76.2	800.2
July	501.4	585.7	28.0	4.6	76.6	504.8	586.6	28.0	4.6	76.7	801.7
FEMALES											
July 2002	208.2	415.4	22.7	5.2	57.1	206.8	418.8	20.8	4.7	57.3	767.2
July 2003	213.9	417.8	27.6	6.2	56.9	214.1	418.0	30.5	6.8	57.3	782.4
2004											
July	223.6	433.6	24.8	5.4	57.4	220.5	431.2	24.9	5.5	57.1	799.0
August	223.9	434.6	24.3	5.3	57.3	220.7	431.6	22.6	5.0	56.7	800.6
September	224.4	436.1	23.7	5.2	57.3	225.7	435.2	26.2	5.7	57.5	802.3
October	225.4	438.3	23.3	5.0	57.5	226.8	443.2	22.7	4.9	58.0	803.1
November	227.1	440.8	23.2	5.0	57.7	228.7	441.7	22.3	4.8	57.7	804.0
December	229.1	443.3	23.6	5.1	58.0	225.1	440.6	22.2	4.8	57.5	804.9
2005											
January	231.0	445.8	24.3	5.2	58.4	231.4	444.5	25.3	5.4	58.3	805.6
February	232.7	448.6	25.0	5.3	58.7	234.1	449.6	24.4	5.2	58.8	806.3
March	234.5	451.8	25.5	5.3	59.1	235.6	452.1	27.3	5.7	59.4	807.1
April	236.4	455.0	25.8	5.4	59.5	236.9	453.9	26.2	5.5	59.4	808.1
May	238.1	457.9	25.8	5.3	59.8	235.2	460.2	24.8	5.1	59.9	809.1
June	239.8	460.4	25.7	5.3	60.0	239.3	460.1	25.1	5.2	59.9	810.1
July	241.1	462.2	25.5	5.2	60.1	244.3	462.0	25.7	5.3	60.1	811.5
PERSONS											
July 2002	655.3	945.6	61.7	6.1	66.1	651.8	946.6	60.6	6.0	66.1	1 523.7
July 2003	679.1	962.4	61.6	6.0	65.9	676.7	963.9	63.5	6.2	66.1	1 553.5
2004											
July	694.5	984.7	51.3	5.0	65.3	692.5	980.5	51.3	5.0	65.0	1 586.5
August	695.5	986.8	50.3	4.9	65.2	691.2	980.7	49.3	4.8	64.8	1 589.8
September	697.7	990.8	49.3	4.7	65.3	696.1	989.0	50.3	4.8	65.2	1 593.1
October	701.8	996.8	48.5	4.6	65.5	704.5	1 003.9	50.0	4.7	66.1	1 595.1
November	707.5	1 003.7	48.2	4.6	65.9	709.3	1 007.2	46.1	4.4	65.9	1 597.2
December	714.1	1 010.7	48.5	4.6	66.2	708.0	1 005.6	47.7	4.5	65.9	1 599.2
2005											
January	720.6	1 017.4	49.2	4.6	66.6	724.1	1 016.9	49.4	4.6	66.6	1 600.9
February	726.2	1 023.7	50.2	4.7	67.0	726.5	1 022.9	49.5	4.6	66.9	1 602.5
March	730.8	1 029.9	51.2	4.7	67.4	732.5	1 032.6	54.4	5.0	67.8	1 604.1
April	734.6	1 035.7	52.1	4.8	67.7	736.9	1 034.4	51.8	4.8	67.6	1 606.2
May	737.8	1 040.8	52.7	4.8	68.0	738.5	1 046.1	50.2	4.6	68.2	1 608.2
June	740.7	1 045.0	53.2	4.8	68.2	732.1	1 041.0	54.3	5.0	68.0	1 610.3
July	742.5	1 047.8	53.5	4.9	68.3	749.1	1 048.7	53.8	4.9	68.3	1 613.2

LABOUR FORCE STATUS (AGED 15 YEARS & OVER)—Tasmania

	TREND					SEASONALLY ADJUSTED					Civilian population aged 15 years and over
	Employed full time	Total employed	Total unemp- loyed	Unemp- loyment rate	Partici- pation rate	Employed full time	Total employed	Total unemp- loyed	Unemp- loyment rate	Partici- pation rate	
	'000	'000	'000	%	%	'000	'000	'000	%	%	
MALES											
July 2002	93.4	109.0	11.4	9.5	65.8	92.4	107.7	11.7	9.8	65.3	183.0
July 2003	96.7	113.2	9.9	8.0	66.4	97.3	113.9	7.8	6.4	65.6	185.4
2004											
July	100.9	117.5	9.3	7.4	67.4	102.8	117.9	9.4	7.4	67.6	188.3
August	100.6	117.5	9.1	7.2	67.2	99.7	117.1	9.3	7.3	67.1	188.5
September	99.9	117.5	8.7	6.9	66.8	99.1	117.5	8.7	6.9	66.9	188.7
October	99.3	117.4	8.1	6.5	66.4	100.2	118.1	8.2	6.5	66.9	188.9
November	98.9	117.3	7.6	6.1	66.1	97.9	117.6	7.5	6.0	66.1	189.2
December	98.8	117.4	7.3	5.9	65.9	99.3	116.4	7.4	5.9	65.3	189.4
2005											
January	98.8	117.7	7.3	5.8	65.9	98.1	116.8	6.6	5.4	65.1	189.6
February	98.8	118.1	7.4	5.9	66.1	99.2	118.4	7.2	5.7	66.2	189.8
March	98.8	118.6	7.6	6.0	66.4	99.4	119.6	7.9	6.2	67.1	189.9
April	98.8	118.9	7.8	6.1	66.6	98.8	118.6	8.7	6.8	66.9	190.1
May	98.6	119.1	7.9	6.2	66.8	98.0	119.2	7.4	5.9	66.5	190.2
June	98.4	119.2	7.9	6.2	66.8	99.0	120.0	7.6	5.9	67.0	190.4
July	98.3	119.1	7.9	6.2	66.7	97.8	118.0	8.0	6.3	66.1	190.5
FEMALES											
July 2002	42.2	89.4	7.5	7.7	50.4	41.0	89.4	8.0	8.2	50.7	192.3
July 2003	46.8	93.5	6.5	6.5	51.4	47.0	92.5	6.5	6.6	50.8	194.7
2004											
July	47.6	96.1	5.9	5.8	51.7	48.5	96.6	6.2	6.0	52.0	197.6
August	47.6	96.4	5.9	5.8	51.7	47.2	96.8	5.1	5.0	51.5	197.8
September	47.5	96.8	5.9	5.7	51.8	46.7	96.6	6.2	6.0	51.9	198.0
October	47.5	97.2	5.9	5.7	52.0	47.5	96.6	6.2	6.1	51.9	198.2
November	47.6	97.7	5.8	5.6	52.2	47.8	97.8	6.0	5.8	52.3	198.4
December	47.9	98.2	5.9	5.6	52.4	47.5	97.6	5.3	5.2	51.8	198.6
2005											
January	48.3	98.7	5.9	5.7	52.6	49.1	99.1	6.0	5.7	52.9	198.7
February	48.7	99.0	6.0	5.7	52.8	48.6	99.9	5.7	5.4	53.1	198.9
March	49.1	99.2	6.1	5.8	52.9	49.5	99.2	6.0	5.7	52.9	199.0
April	49.6	99.3	6.1	5.8	53.0	48.7	98.9	7.3	6.8	53.3	199.1
May	50.1	99.5	6.1	5.8	53.0	50.1	98.7	5.7	5.5	52.4	199.2
June	50.7	99.8	6.0	5.7	53.1	50.7	99.7	5.8	5.5	53.0	199.4
July	51.2	100.0	5.9	5.5	53.1	52.2	101.2	5.6	5.3	53.5	199.5
PERSONS											
July 2002	135.6	198.4	18.9	8.7	57.9	133.4	197.1	19.7	9.1	57.8	375.3
July 2003	143.5	206.7	16.4	7.4	58.7	144.3	206.3	14.3	6.5	58.1	380.1
2004											
July	148.5	213.6	15.3	6.7	59.3	151.3	214.5	15.6	6.8	59.6	385.8
August	148.2	214.0	15.0	6.5	59.3	146.9	213.9	14.4	6.3	59.1	386.3
September	147.5	214.2	14.6	6.4	59.2	145.8	214.2	14.9	6.5	59.2	386.7
October	146.8	214.5	14.0	6.1	59.0	147.7	214.7	14.5	6.3	59.2	387.2
November	146.6	215.0	13.5	5.9	58.9	145.7	215.4	13.5	5.9	59.1	387.6
December	146.7	215.6	13.2	5.8	59.0	146.7	214.1	12.7	5.6	58.4	388.1
2005											
January	147.1	216.3	13.2	5.8	59.1	147.2	215.9	12.7	5.5	58.9	388.3
February	147.5	217.1	13.4	5.8	59.3	147.8	218.3	12.9	5.6	59.5	388.6
March	147.9	217.7	13.7	5.9	59.5	148.8	218.8	13.9	6.0	59.8	388.9
April	148.4	218.3	13.9	6.0	59.7	147.5	217.5	15.9	6.8	60.0	389.2
May	148.8	218.7	14.0	6.0	59.7	148.1	217.9	13.1	5.7	59.3	389.5
June	149.1	219.0	13.9	6.0	59.8	149.7	219.7	13.4	5.8	59.8	389.7
July	149.5	219.2	13.8	5.9	59.8	150.0	219.2	13.6	5.8	59.7	390.0

	TREND					Civilian population aged 15 years and over
	Employed full time	Total employed	Total unemployed	Unemployment rate	Participation rate	
	'000	'000	'000	%	%	'000
MALES						
July 2002	44.9	55.3	2.9	5.0	79.2	73.5
July 2003	44.1	53.8	3.1	5.5	77.1	73.8
2004						
July	42.8	50.9	4.3	7.7	74.4	74.1
August	42.6	50.5	4.5	8.1	74.1	74.2
September	42.7	50.4	4.4	8.1	73.8	74.3
October	43.0	50.6	4.3	7.9	73.7	74.5
November	43.5	50.9	4.2	7.6	73.8	74.6
December	43.8	51.2	4.0	7.3	73.9	74.7
2005						
January	43.9	51.4	3.9	7.1	73.8	74.9
February	43.8	51.4	3.8	6.8	73.4	75.2
March	43.4	51.2	3.6	6.5	72.7	75.4
April	43.0	50.9	3.3	6.1	72.0	75.4
May	42.5	50.7	3.1	5.7	71.3	75.4
June	42.2	50.6	2.8	5.3	70.8	75.4
July	41.9	50.5	2.6	4.9	70.4	75.6
FEMALES						
July 2002	29.8	44.7	1.9	4.0	67.2	69.2
July 2003	28.3	41.0	3.0	6.8	63.4	69.3
2004						
July	29.2	43.9	2.8	6.1	66.9	69.8
August	29.0	43.7	2.9	6.2	66.7	69.9
September	29.0	43.7	2.9	6.2	66.5	70.0
October	29.2	43.7	2.7	5.9	66.3	70.0
November	29.4	43.7	2.6	5.6	66.0	70.1
December	29.5	43.5	2.5	5.3	65.5	70.2
2005						
January	29.4	43.3	2.3	5.1	64.9	70.2
February	29.3	43.0	2.3	5.0	64.4	70.3
March	29.4	42.8	2.2	4.9	64.0	70.4
April	29.6	42.8	2.2	4.9	63.9	70.5
May	30.1	43.0	2.2	4.9	64.0	70.6
June	30.6	43.2	2.3	5.0	64.3	70.7
July	31.3	43.5	2.3	5.0	64.6	70.9
PERSONS						
July 2002	74.8	100.0	4.8	4.6	73.4	142.7
July 2003	72.3	94.8	6.1	6.1	70.5	143.0
2004						
July	72.0	94.8	7.1	7.0	70.8	143.9
August	71.7	94.2	7.4	7.2	70.5	144.1
September	71.8	94.1	7.3	7.2	70.3	144.3
October	72.2	94.3	7.1	7.0	70.1	144.5
November	72.8	94.6	6.7	6.7	70.0	144.7
December	73.2	94.8	6.5	6.4	69.8	144.8
2005						
January	73.3	94.7	6.2	6.2	69.5	145.2
February	73.1	94.4	6.0	6.0	69.0	145.5
March	72.8	94.0	5.8	5.8	68.5	145.8
April	72.6	93.8	5.6	5.6	68.1	145.9
May	72.6	93.7	5.3	5.3	67.8	146.0
June	72.8	93.8	5.1	5.1	67.6	146.1
July	73.2	94.0	4.9	5.0	67.6	146.4

	TREND					Civilian population aged 15 years and over
	Employed full time	Total employed	Total unemployed	Unemployment rate	Participation rate	
	'000	'000	'000	%	%	'000
MALES						
July 2002	77.5	90.5	4.6	4.9	78.0	122.0
July 2003	74.8	90.7	4.1	4.3	76.7	123.5
2004						
July	77.3	91.7	3.8	4.0	76.2	124.5
August	77.6	91.3	4.0	4.2	75.8	124.7
September	78.0	91.1	4.3	4.5	75.9	124.8
October	78.6	91.4	4.5	4.6	76.4	124.9
November	79.2	92.0	4.5	4.7	77.0	125.0
December	79.6	92.8	4.4	4.5	77.7	125.1
2005						
January	79.7	93.5	4.1	4.2	78.0	125.2
February	79.6	93.9	3.8	3.9	78.0	125.3
March	79.4	94.0	3.5	3.6	77.7	125.4
April	79.2	93.9	3.3	3.4	77.4	125.6
May	79.2	93.9	3.1	3.2	77.2	125.8
June	79.3	94.0	3.0	3.0	77.0	126.0
July	79.4	94.1	2.9	3.0	77.0	126.0
FEMALES						
July 2002	53.9	85.3	3.5	4.0	68.3	130.2
July 2003	52.4	83.2	3.6	4.1	66.0	131.4
2004						
July	52.6	84.4	3.0	3.5	66.2	132.0
August	52.5	84.5	3.0	3.5	66.3	132.1
September	52.4	85.0	3.0	3.4	66.6	132.2
October	52.4	85.7	2.9	3.3	67.0	132.3
November	52.6	86.6	2.8	3.1	67.5	132.3
December	53.2	87.3	2.7	3.0	68.0	132.4
2005						
January	53.9	87.7	2.6	2.9	68.2	132.5
February	54.7	87.7	2.7	2.9	68.2	132.5
March	55.2	87.5	2.7	3.0	68.0	132.6
April	55.5	87.1	2.8	3.2	67.8	132.6
May	55.6	86.9	2.9	3.3	67.7	132.7
June	55.7	86.8	3.1	3.4	67.7	132.7
July	55.7	86.6	3.2	3.5	67.6	132.8
PERSONS						
July 2002	131.4	175.8	8.2	4.4	73.0	252.2
July 2003	127.1	173.9	7.7	4.2	71.2	254.9
2004						
July	129.9	176.1	6.8	3.7	71.0	256.6
August	130.1	175.8	7.0	3.9	70.9	256.8
September	130.4	176.1	7.3	4.0	71.1	257.0
October	131.0	177.1	7.4	4.0	71.6	257.1
November	131.8	178.6	7.3	3.9	72.2	257.4
December	132.7	180.1	7.1	3.8	72.7	257.5
2005						
January	133.6	181.1	6.8	3.6	73.0	257.7
February	134.3	181.6	6.5	3.4	73.0	257.8
March	134.6	181.4	6.3	3.3	72.7	257.9
April	134.7	181.1	6.1	3.3	72.5	258.2
May	134.8	180.8	6.0	3.2	72.3	258.4
June	135.0	180.8	6.0	3.2	72.2	258.7
July	135.1	180.7	6.0	3.2	72.2	258.8

	EMPLOYED			UNEMPLOYED		Labour force	Not in labour force	Civilian population aged 15 years and over	UNEMPLOYMENT RATE		Participation rate
	Full time	Part time	Total	Looking for f/t work	Total				Looking for f/t work	Total	
	'000	'000	'000	'000	'000	'000	'000	'000	%	%	%
MALES											
New South Wales	1 538.5	255.9	1 794.4	67.8	83.1	1 877.5	805.1	2 682.6	4.2	4.4	70.0
Victoria	1 169.3	211.7	1 381.1	50.7	63.9	1 445.0	544.4	1 989.3	4.2	4.4	72.6
Queensland	947.1	150.8	1 097.8	37.5	46.0	1 143.8	411.7	1 555.5	3.8	4.0	73.5
South Australia	341.2	64.7	405.9	15.6	19.8	425.7	191.7	617.4	4.4	4.6	68.9
Western Australia	499.9	84.1	583.9	19.8	25.7	609.7	192.0	801.7	3.8	4.2	76.1
Tasmania	96.6	21.1	117.7	6.5	8.0	125.6	64.9	190.5	6.3	6.3	65.9
Northern Territory	42.8	8.5	51.3	1.8	2.7	54.0	21.5	75.6	4.1	5.0	71.5
Australian Capital Territory	80.0	15.3	95.3	2.0	3.0	98.3	27.7	126.0	2.5	3.1	78.0
Australia	4 715.4	812.1	5 527.5	201.8	252.1	5 779.6	2 259.0	8 038.6	4.1	4.4	71.9
FEMALES											
New South Wales	803.1	674.5	1 477.6	46.0	70.1	1 547.6	1 220.3	2 767.9	5.4	4.5	55.9
Victoria	592.9	493.8	1 086.7	36.6	67.9	1 154.7	928.3	2 083.0	5.8	5.9	55.4
Queensland	499.0	405.3	904.3	31.0	49.6	953.9	638.5	1 592.4	5.8	5.2	59.9
South Australia	172.8	164.8	337.5	8.5	13.4	350.9	288.8	639.7	4.7	3.8	54.9
Western Australia	239.8	217.0	456.8	14.3	23.0	479.9	331.7	811.5	5.6	4.8	59.1
Tasmania	50.9	49.4	100.4	3.8	5.6	105.9	93.5	199.5	7.0	5.3	53.1
Northern Territory	31.6	12.2	43.8	*0.9	2.6	46.4	24.5	70.9	*2.6	5.6	65.4
Australian Capital Territory	55.0	31.9	86.9	1.5	2.8	89.7	43.1	132.8	2.6	3.1	67.6
Australia	2 445.1	2 048.9	4 494.0	142.5	235.0	4 729.0	3 568.7	8 297.7	5.5	5.0	57.0
PERSONS											
New South Wales	2 341.6	930.3	3 272.0	113.8	153.2	3 425.2	2 025.4	5 450.5	4.6	4.5	62.8
Victoria	1 762.3	705.6	2 467.8	87.3	131.8	2 599.6	1 472.7	4 072.3	4.7	5.1	63.8
Queensland	1 446.1	556.0	2 002.1	68.5	95.6	2 097.7	1 050.2	3 147.9	4.5	4.6	66.6
South Australia	514.0	229.5	743.5	24.0	33.2	776.6	480.5	1 257.1	4.5	4.3	61.8
Western Australia	739.7	301.1	1 040.8	34.1	48.7	1 089.5	523.7	1 613.2	4.4	4.5	67.5
Tasmania	147.5	70.5	218.0	10.4	13.6	231.6	158.4	390.0	6.6	5.9	59.4
Northern Territory	74.4	20.7	95.1	2.7	5.3	100.4	46.0	146.4	3.5	5.2	68.6
Australian Capital Territory	135.0	47.2	182.2	3.5	5.8	188.1	70.8	258.8	2.5	3.1	72.7
Australia	7 160.6	2 861.0	10 021.6	344.3	487.1	10 508.7	5 827.7	16 336.3	4.6	4.6	64.3

* estimate is subject to sampling variability too high for most practical purposes

	EMPLOYED		UNEMPLOYED		UNEMPLOYMENT RATE		Participation rate	Employment to population ratio	Unemployment to population ratio – looking for full-time work
	Full time	Total	Looking for f/t work	Total	Looking for f/t work	Total			
	'000	'000	'000	'000	%	%			
MALES									
July 2002	141.3	332.0	35.5	70.0	20.1	17.4	58.1	47.9	5.1
July 2003	143.0	331.7	36.6	70.7	20.4	17.6	57.4	47.3	5.2
2004									
July	147.8	352.4	35.9	68.8	19.5	16.4	59.1	49.6	5.1
August	147.6	350.0	35.6	69.0	19.4	16.5	58.8	49.3	5.0
September	148.5	348.3	35.5	69.0	19.3	16.6	58.5	49.0	5.0
October	150.7	348.3	35.4	68.6	19.0	16.5	58.5	48.9	5.0
November	153.9	350.4	35.1	67.7	18.6	16.2	58.7	49.2	4.9
December	157.6	354.4	34.8	66.6	18.1	15.8	59.1	49.7	4.9
2005									
January	161.3	359.6	34.6	65.8	17.6	15.5	59.7	50.4	4.8
February	164.0	364.2	34.4	65.2	17.4	15.2	60.2	51.1	4.8
March	165.2	366.7	34.5	65.2	17.3	15.1	60.5	51.4	4.8
April	165.1	367.2	34.6	65.3	17.3	15.1	60.6	51.4	4.8
May	164.6	366.2	34.7	65.5	17.4	15.2	60.5	51.3	4.9
June	164.0	364.5	34.8	65.6	17.5	15.3	60.2	51.0	4.9
July	162.8	362.1	35.0	65.9	17.7	15.4	59.9	50.7	4.9
FEMALES									
July 2002	77.4	332.9	27.6	64.2	26.3	16.2	59.7	50.1	4.1
July 2003	84.1	346.7	25.7	58.6	23.4	14.5	60.2	51.5	3.8
2004									
July	86.4	355.6	28.5	66.5	24.8	15.8	61.9	52.1	4.2
August	87.3	353.5	27.4	66.2	23.9	15.8	61.5	51.8	4.0
September	88.1	352.4	26.3	65.1	23.0	15.6	61.1	51.6	3.9
October	88.8	352.6	25.5	63.3	22.3	15.2	60.9	51.6	3.7
November	89.0	353.7	25.2	61.4	22.1	14.8	60.7	51.7	3.7
December	88.5	355.0	25.5	60.1	22.3	14.5	60.7	51.9	3.7
2005									
January	87.7	356.7	26.0	59.1	22.9	14.2	60.8	52.2	3.8
February	86.8	358.7	26.7	58.8	23.5	14.1	61.0	52.5	3.9
March	86.3	361.1	27.2	59.2	23.9	14.1	61.4	52.8	4.0
April	86.0	363.6	27.4	60.1	24.1	14.2	61.9	53.2	4.0
May	85.7	366.0	27.4	61.4	24.3	14.4	62.5	53.5	4.0
June	85.3	368.1	27.4	62.8	24.3	14.6	63.0	53.8	4.0
July	85.3	369.9	27.7	64.9	24.5	14.9	63.6	54.1	4.0
PERSONS									
July 2002	218.7	664.9	63.1	134.3	22.4	16.8	58.9	49.0	4.6
July 2003	227.1	678.4	62.3	129.4	21.5	16.0	58.8	49.3	4.5
2004									
July	234.2	708.0	64.3	135.3	21.5	16.1	60.5	50.9	4.6
August	234.9	703.5	62.9	135.3	21.1	16.2	60.1	50.5	4.5
September	236.6	700.7	61.8	134.1	20.7	16.1	59.8	50.3	4.4
October	239.4	700.9	60.9	131.9	20.3	15.8	59.6	50.3	4.4
November	242.8	704.1	60.4	129.1	19.9	15.5	59.7	50.4	4.3
December	246.2	709.4	60.3	126.7	19.7	15.2	59.9	50.8	4.3
2005									
January	249.0	716.3	60.6	124.8	19.6	14.8	60.2	51.3	4.3
February	250.9	722.9	61.1	124.0	19.6	14.6	60.6	51.7	4.4
March	251.5	727.8	61.7	124.4	19.7	14.6	61.0	52.1	4.4
April	251.1	730.8	61.9	125.4	19.8	14.6	61.3	52.3	4.4
May	250.3	732.3	62.1	126.8	19.9	14.8	61.4	52.4	4.4
June	249.3	732.6	62.2	128.4	20.0	14.9	61.6	52.4	4.4
July	248.1	732.0	62.7	130.8	20.2	15.2	61.7	52.3	4.4

PERSONS AGED 15–19 YEARS, Labour Force Status: **Seasonally Adjusted**

	EMPLOYED		UNEMPLOYED		UNEMPLOYMENT RATE		Participation rate	Employment to population ratio	Unemployment to population ratio – looking for full-time work
	Full time	Total	Looking for f/t work	Total	Looking for f/t work	Total			
'000	'000	'000	'000	%	%	%	%	%	
MALES									
July 2002	141.6	334.3	37.1	67.9	20.8	16.9	58.1	48.3	5.4
July 2003	140.5	323.0	35.9	71.9	20.4	18.2	56.3	46.0	5.1
2004									
July	151.2	356.1	35.2	65.8	18.9	15.6	59.4	50.2	5.0
August	148.5	343.0	34.3	69.3	18.8	16.8	58.0	48.3	4.8
September	147.8	347.4	39.4	72.9	21.0	17.3	59.1	48.9	5.5
October	147.8	343.7	33.1	68.4	18.3	16.6	57.9	48.3	4.6
November	153.3	350.2	34.1	65.4	18.2	15.7	58.4	49.2	4.8
December	153.4	354.1	36.2	67.4	19.1	16.0	59.2	49.7	5.1
2005									
January	169.1	360.0	35.1	65.0	17.2	15.3	59.6	50.5	4.9
February	164.8	364.7	34.5	66.6	17.3	15.4	60.5	51.1	4.8
March	164.1	369.1	32.8	63.9	16.6	14.7	60.7	51.7	4.6
April	165.3	370.4	34.3	64.1	17.2	14.8	60.9	51.9	4.8
May	164.9	367.5	36.1	67.6	18.0	15.5	60.9	51.5	5.1
June	163.8	365.4	35.3	65.0	17.7	15.1	60.2	51.1	4.9
July	161.7	353.6	34.4	66.2	17.5	15.8	58.7	49.5	4.8
FEMALES									
July 2002	78.7	329.7	23.7	61.2	23.1	15.7	58.8	49.6	3.6
July 2003	89.7	351.6	21.5	55.6	19.3	13.7	60.5	52.2	3.2
2004									
July	82.7	354.4	29.9	68.1	26.6	16.1	61.9	52.0	4.4
August	86.7	349.8	26.8	67.2	23.6	16.1	61.1	51.3	3.9
September	90.1	353.3	26.8	65.7	22.9	15.7	61.4	51.7	3.9
October	90.3	354.3	25.7	61.7	22.1	14.8	60.9	51.9	3.8
November	87.8	352.4	20.9	59.1	19.2	14.4	60.2	51.6	3.1
December	90.9	355.8	30.0	66.8	24.8	15.8	61.8	52.0	4.4
2005									
January	85.3	354.7	23.4	53.2	21.6	13.0	59.6	51.9	3.4
February	85.9	361.8	28.3	57.2	24.8	13.7	61.3	52.9	4.1
March	87.0	360.0	26.3	62.2	23.2	14.7	61.7	52.6	3.8
April	87.3	361.7	29.2	61.6	25.0	14.6	61.9	52.9	4.3
May	83.8	365.0	26.5	58.5	24.0	13.8	61.9	53.4	3.9
June	86.9	373.9	26.9	59.1	23.7	13.7	63.3	54.7	3.9
July	84.3	367.6	27.7	70.8	24.7	16.1	64.1	53.7	4.0
PERSONS									
July 2002	220.2	664.1	60.7	129.1	21.6	16.3	58.4	48.9	4.5
July 2003	230.2	674.6	57.4	127.6	20.0	15.9	58.3	49.1	4.2
2004									
July	233.9	710.5	65.2	133.9	21.8	15.9	60.7	51.0	4.7
August	235.2	692.8	61.1	136.5	20.6	16.5	59.5	49.7	4.4
September	237.9	700.7	66.2	138.6	21.8	16.5	60.2	50.3	4.7
October	238.2	697.9	58.8	130.1	19.8	15.7	59.4	50.0	4.2
November	241.1	702.6	54.9	124.5	18.5	15.1	59.3	50.3	3.9
December	244.3	710.0	66.2	134.2	21.3	15.9	60.5	50.8	4.7
2005									
January	254.4	714.7	58.6	118.2	18.7	14.2	59.6	51.2	4.2
February	250.7	726.5	62.8	123.8	20.0	14.6	60.9	52.0	4.5
March	251.0	729.0	59.0	126.1	19.0	14.7	61.2	52.2	4.2
April	252.6	732.1	63.4	125.7	20.1	14.7	61.4	52.4	4.5
May	248.7	732.5	62.6	126.1	20.1	14.7	61.4	52.4	4.5
June	250.7	739.3	62.2	124.1	19.9	14.4	61.7	52.9	4.4
July	246.0	721.1	62.1	137.0	20.1	16.0	61.4	51.6	4.4

	EMPLOYED			UNEMPLOYED			UNEMPLOYMENT			Participation rate	Unemployment to population ratio – looking for full-time work	
	Full time	Part time	Total	Looking for f/t work	Total	Labour force	Not in labour force	Civilian population aged 15–19 years	RATE			
									Looking for f/t work			Total
'000	'000	'000	'000	'000	'000	'000	'000	%	%	%	%	
NOT ATTENDING FULL-TIME EDUCATION												
Males												
July 2002	135.1	43.1	178.2	27.2	30.5	208.6	20.3	229.0	16.8	14.6	91.1	11.9
July 2003	138.7	34.8	173.5	25.2	27.7	201.3	28.3	229.6	15.4	13.8	87.7	11.0
July 2004	142.9	37.8	180.7	25.3	26.8	207.6	25.6	233.2	15.0	12.9	89.0	10.8
July 2005	152.6	35.5	188.0	23.6	23.6	211.6	22.8	234.5	13.4	11.2	90.3	10.1
Females												
July 2002	72.2	56.8	129.0	18.4	20.8	149.8	31.5	181.3	20.3	13.9	82.6	10.1
July 2003	80.3	52.4	132.7	16.2	17.5	150.2	33.4	183.6	16.8	11.7	81.8	8.8
July 2004	75.7	58.5	134.2	21.0	24.3	158.5	29.3	187.9	21.7	15.3	84.4	11.2
July 2005	75.2	56.2	131.4	19.8	22.5	154.0	29.3	183.3	20.9	14.6	84.0	10.8
Persons												
July 2002	207.3	99.8	307.1	45.6	51.3	358.4	51.9	410.3	18.0	14.3	87.4	11.1
July 2003	219.0	87.2	306.2	41.4	45.3	351.5	61.7	413.2	15.9	12.9	85.1	10.0
July 2004	218.6	96.4	315.0	46.3	51.1	366.1	55.0	421.1	17.5	14.0	86.9	11.0
July 2005	227.8	91.7	319.5	43.4	46.1	365.6	52.2	417.8	16.0	12.6	87.5	10.4
ATTENDING FULL-TIME EDUCATION												
Males												
July 2002	12.1	147.0	159.1	*3.6	26.2	185.4	278.3	463.7	*23.1	14.2	40.0	*0.8
July 2003	7.2	145.3	152.4	4.4	31.4	183.9	287.9	471.8	38.1	17.1	39.0	0.9
July 2004	13.6	164.6	178.2	*3.4	26.8	205.0	271.8	476.7	*20.2	13.1	43.0	*0.7
July 2005	14.6	153.5	168.1	4.4	30.2	198.3	281.8	480.1	23.1	15.2	41.3	0.9
Females												
July 2002	8.6	189.2	197.8	*3.4	30.0	227.7	255.8	483.5	*28.2	13.2	47.1	*0.7
July 2003	11.5	203.7	215.1	*3.7	28.5	243.7	246.1	489.8	*24.7	11.7	49.7	*0.8
July 2004	8.7	207.2	215.9	6.9	32.0	247.9	246.4	494.3	44.2	12.9	50.2	1.4
July 2005	10.6	221.0	231.6	6.0	35.9	267.4	233.4	500.8	36.1	13.4	53.4	1.2
Persons												
July 2002	20.7	336.2	356.9	7.0	56.2	413.1	534.1	947.2	25.3	13.6	43.6	0.7
July 2003	18.6	348.9	367.6	8.2	59.9	427.5	534.1	961.6	30.5	14.0	44.5	0.8
July 2004	22.3	371.8	394.1	10.3	58.8	452.9	518.2	971.0	31.6	13.0	46.6	1.1
July 2005	25.2	374.5	399.6	10.4	66.1	465.7	515.2	980.9	29.1	14.2	47.5	1.1
TOTAL												
Males												
July 2002	147.2	190.1	337.3	30.9	56.7	394.0	298.7	692.7	17.3	14.4	56.9	4.5
July 2003	145.9	180.1	326.0	29.6	59.2	385.1	316.2	701.4	16.9	15.4	54.9	4.2
July 2004	156.5	202.4	358.9	28.7	53.6	412.5	297.4	710.0	15.5	13.0	58.1	4.0
July 2005	167.2	189.0	356.1	28.0	53.8	409.9	304.7	714.6	14.3	13.1	57.4	3.9
Females												
July 2002	80.8	246.0	326.7	21.8	50.8	377.5	287.3	664.8	21.2	13.4	56.8	3.3
July 2003	91.8	256.0	347.8	19.9	46.1	393.9	279.6	673.4	17.8	11.7	58.5	3.0
July 2004	84.4	265.7	350.1	27.8	56.3	406.4	275.7	682.1	24.8	13.9	59.6	4.1
July 2005	85.8	277.2	363.0	25.8	58.4	421.4	262.7	684.0	23.1	13.9	61.6	3.8
Persons												
July 2002	228.0	436.0	664.0	52.6	107.5	771.5	586.0	1 357.5	18.8	13.9	56.8	3.9
July 2003	237.6	436.2	673.8	49.5	105.2	779.0	595.8	1 374.8	17.2	13.5	56.7	3.6
July 2004	240.9	468.2	709.0	56.5	109.9	818.9	573.2	1 392.1	19.0	13.4	58.8	4.1
July 2005	253.0	466.1	719.1	53.8	112.2	831.3	567.3	1 398.6	17.5	13.5	59.4	3.8

* estimate is subject to sampling variability too high for most practical purposes

	EMPLOYED			UNEMPLOYED			Civilian population aged 15–19 years		UNEMPLOYMENT RATE		Participation rate	Unemployment to population ratio – looking for full-time work
	Full time	Part time	Total	Looking for f/t work	Total	Labour force			Looking for f/t work	Total		
	'000	'000	'000	'000	'000	'000	'000	'000	%	%	%	%
NOT ATTENDING FULL-TIME EDUCATION												
New South Wales	68.0	32.4	100.4	13.6	14.0	114.4	10.5	124.8	16.7	12.2	91.6	10.9
Victoria	39.8	17.6	57.4	8.8	9.6	66.9	11.5	78.5	18.2	14.3	85.3	11.2
Queensland	54.2	19.2	73.4	9.8	10.6	84.1	13.3	97.4	15.3	12.7	86.3	10.1
South Australia	18.7	6.7	25.4	4.3	4.4	29.8	5.4	35.2	18.5	14.9	84.7	12.1
Western Australia	35.9	9.9	45.8	5.3	5.3	51.1	5.8	56.9	12.9	10.4	89.8	9.3
Tasmania	5.9	2.5	8.3	*0.8	*0.9	9.2	2.1	11.3	*11.6	*9.5	81.7	*6.9
Northern Territory	3.2	1.2	4.4	*0.2	*0.7	5.1	2.6	7.7	*6.3	*13.4	66.4	*2.8
Australian Capital Territory	2.2	2.2	4.4	*0.6	*0.6	5.0	*1.0	6.0	*22.3	*12.7	83.2	*10.5
Australia	227.8	91.7	319.5	43.4	46.1	365.6	52.2	417.8	16.0	12.6	87.5	10.4
ATTENDING FULL-TIME EDUCATION												
New South Wales	10.0	118.7	128.6	*3.7	17.1	145.7	186.9	332.7	*27.3	11.7	43.8	*1.1
Victoria	5.3	93.5	98.8	*2.3	22.8	121.6	139.6	261.2	*30.6	18.7	46.5	*0.9
Queensland	5.2	80.0	85.1	*2.5	13.2	98.3	83.2	181.6	*32.3	13.4	54.2	*1.4
South Australia	*0.9	25.8	26.7	*1.0	5.2	31.9	36.6	68.5	*52.3	16.2	46.5	*1.5
Western Australia	3.1	38.4	41.5	*0.5	5.7	47.2	42.7	90.0	*14.3	12.1	52.5	*0.6
Tasmania	*0.2	7.7	7.9	*0.2	*0.7	8.6	14.5	23.0	*54.5	*7.7	37.3	*1.0
Northern Territory	*—	2.9	2.9	*—	*0.2	3.1	3.7	6.9	*—	*7.4	45.8	*—
Australian Capital Territory	*0.4	7.6	8.0	*—	1.2	9.2	7.9	17.1	*—	13.4	53.9	*—
Australia	25.2	374.5	399.6	10.4	66.1	465.7	515.2	980.9	29.1	14.2	47.5	1.1
TOTAL												
New South Wales	78.0	151.0	229.0	17.4	31.1	260.1	197.4	457.5	18.2	12.0	56.9	3.8
Victoria	45.1	111.1	156.2	11.2	32.3	188.5	151.1	339.6	19.8	17.2	55.5	3.3
Queensland	59.4	99.2	158.6	12.3	23.8	182.4	96.6	278.9	17.1	13.1	65.4	4.4
South Australia	19.7	32.4	52.1	5.3	9.6	61.7	42.0	103.7	21.2	15.5	59.5	5.1
Western Australia	39.0	48.3	87.4	5.8	11.0	98.4	48.5	146.9	13.0	11.2	67.0	4.0
Tasmania	6.1	10.2	16.3	*1.0	1.5	17.8	16.5	34.3	*14.3	8.6	51.9	*2.9
Northern Territory	3.2	4.1	7.3	*0.2	*0.9	8.2	6.3	14.5	*6.3	*11.1	56.7	*1.5
Australian Capital Territory	2.6	9.7	12.4	*0.6	1.9	14.2	8.9	23.1	*19.5	13.1	61.6	*2.7
Australia	253.0	466.1	719.1	53.8	112.2	831.3	567.3	1 398.6	17.5	13.5	59.4	3.8

* estimate is subject to sampling variability too high for most practical purposes

— nil or rounded to zero (including null cells)

WHAT IF...? REVISIONS TO TREND ESTIMATES

EFFECT OF NEW SEASONALLY ADJUSTED ESTIMATES ON TREND ESTIMATES

TREND REVISIONS

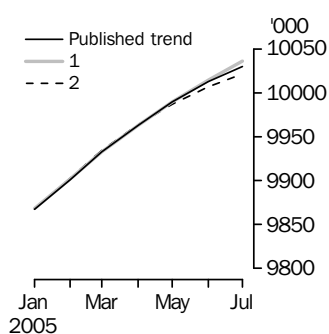
Each time new seasonally adjusted estimates become available, trend estimates are revised. This revision is a combined result of the concurrent seasonal adjustment process and the application of surrogates of the Henderson average to the seasonally adjusted series (see paragraphs 21 to 27 of the Explanatory Notes).

The examples in the tables below show two illustrative scenarios and the consequent revisions to previous trend estimates of employment and the unemployment rate. The revisions in the scenarios below are only due to the use of surrogates of the Henderson average, as the impact of revision of the seasonally adjusted estimates can not be estimated in advance.

- (1) The August seasonally adjusted estimate is *higher* than the July estimate by:
0.26% for employment
1.80% for the unemployment rate
- (2) The August seasonally adjusted estimate is *lower* than the July estimate by:
0.26% for employment
1.80% for the unemployment rate

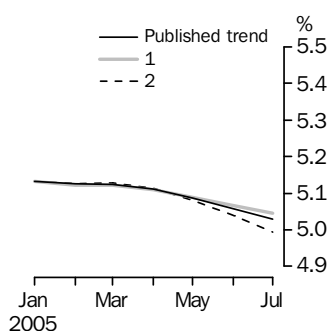
The percentage changes of 0.26% and 1.80% were chosen because they represent the average absolute monthly percentage changes in employment and the unemployment rate respectively.

EMPLOYMENT



WHAT IF NEXT MONTH'S SEASONALLY ADJUSTED ESTIMATE IS:			
	Trend as published	(1) 10 061.0 i.e. rises by 0.26%	(2) 10 008.8 i.e. falls by 0.26%
2005			
April	9 962.7	9 962.7	9 963.6
May	9 989.5	9 989.6	9 987.3
June	10 012.8	10 014.3	10 006.5
July	10 030.3	10 035.8	10 021.3

UNEMPLOYMENT RATE



WHAT IF NEXT MONTH'S SEASONALLY ADJUSTED ESTIMATE IS:			
	Trend as published	(1) 5.1 i.e. rises by 1.80%	(2) 4.9 i.e. falls by 1.80%
2005			
April	5.1	5.1	5.1
May	5.1	5.1	5.1
June	5.1	5.1	5.0
July	5.0	5.0	5.0

EXPLANATORY NOTES

INTRODUCTION

1 This publication contains estimates of the civilian labour force derived from the Labour Force Survey component of the Monthly Population Survey. The full time series for estimates from this publication are also available electronically – see *Labour Force, Australia, Spreadsheets* (cat. no. 6202.0.55.001). More detailed estimates are released one week after this publication in various electronic formats – see *Labour Force, Australia, Detailed – Electronic Delivery* (cat. no. 6291.0.55.001).

CONCEPTS, SOURCES AND METHODS

2 The conceptual framework used in Australia's Labour Force Survey aligns closely with the standards and guidelines set out in Resolutions of International Conferences of Labour Statisticians. Descriptions of the underlying concepts and structure of Australia's labour force statistics, and the sources and methods used in compiling the estimates, are presented in *Labour Statistics: Concepts, Sources and Methods* (cat. no. 6102.0.55.001) which is available on the ABS web site <<http://www.abs.gov.au>> (Methods, Classifications, Concepts & Standards).

LABOUR FORCE SURVEY

3 The Labour Force Survey is based on a multi-stage area sample of private dwellings (currently about 30,000 houses, flats, etc.) and a list sample of non-private dwellings (hotels, motels, etc.), and covers about 0.45% of the population of Australia. Information is obtained from the occupants of selected dwellings by specially trained interviewers.

4 The information is collected using computer-assisted interviewing (CAI), whereby responses are recorded directly onto an electronic questionnaire on a notebook computer. The CAI method was progressively implemented from October 2003 to August 2004, replacing the 'pen and paper' method previously used.

5 Households selected for the Labour Force Survey are interviewed each month for eight months, with one-eighth of the sample being replaced each month. The first interview is conducted face-to-face. Subsequent interviews are conducted by telephone (if acceptable to the respondent).

6 The interviews are generally conducted during the two weeks beginning on the Monday between the 6th and 12th of each month. The information obtained relates to the week before the interview (i.e. the reference week). Each year, to deal with operational difficulties involved with collecting and processing the Labour Force Survey around the Christmas and New Year holiday period, interviews for December start four weeks after November interviews start, and January interviews start five weeks after December interviews start. As a result, January interviewing may commence as early as the 8th or as late as the 14th, depending on the year. Occasionally, circumstances that present significant operational difficulties for survey collection can result in a change to the normal pattern for the start of interviewing.

7 Estimates from the Labour Force Survey are published first in this publication 31 days after the commencement of interviews for that month, with the exception of estimates for each December which are published 38 days after the commencement of interviews.

SCOPE OF SURVEY

8 The Labour Force Survey includes all persons aged 15 years and over except members of the permanent defence forces, certain diplomatic personnel of overseas governments customarily excluded from census and estimated population counts, overseas residents in Australia, and members of non-Australian defence forces (and their dependants) stationed in Australia.

COVERAGE

9 In the Labour Force Survey, coverage rules are applied which aim to ensure that each person is associated with only one dwelling, and hence has only one chance of selection. The coverage rules are necessarily a balance between theoretical and operational considerations. Nevertheless, the chance of a person being enumerated at two separate dwellings in the survey is considered to be negligible.

EXPLANATORY NOTES *continued*

POPULATION BENCHMARKS

10 Labour Force Survey estimates are calculated in such a way as to add up to independent estimates of the civilian population aged 15 years and over (population benchmarks). From February 2004, labour force estimates have been compiled using benchmarks based on the results of the 2001 Census of Population and Housing. Revisions were made to historical estimates from January 1999 to January 2004.

COMPARABILITY OF SERIES

11 From April 1986, the definition of employed persons was changed to include persons who worked without pay between 1 and 14 hours per week in a family business or on a farm (i.e. contributing family workers). For further information, see paragraphs 36 and 37 of the Explanatory Notes to the February 1987 issue of *Labour Force, Australia* (cat. no. 6203.0).

12 The ABS introduced telephone interviewing into the Labour Force Survey in August 1996. Implementation was phased in for each new sample group from August 1996 to February 1997. During the period of implementation, the new method produced different estimates than would have been obtained under the old methodology. The effect dissipated over the final months of implementation and was no longer discernible from February 1997. The estimates for February 1997 and onwards are directly comparable to estimates for periods prior to August 1996. For further details, see the feature article in the June 1997 issue of *Labour Force, Australia* (cat. no. 6203.0).

13 From April 2001 the Labour Force Survey has been conducted using a redesigned questionnaire containing additional data items and some minor definitional changes. The definition of unemployed persons was changed to include all persons who were waiting to start work and were available to start in the reference week. This change was introduced in February 2004, when historical unit record data were revised from April 2001 to January 2004. This revision created a small trend break at April 2001 in unemployed persons and unemployment rate series. For further details, see *Information Paper: Forthcoming Changes to Labour Force Statistics* (cat. no. 6292.0).

14 Core labour force series were revised in April 2001 for the period April 1986 to March 2001 for the remaining definitional changes introduced with the redesigned questionnaire, to reduce the impact of the changes on labour force series. For further details, see *Information Paper: Implementing the Redesigned Labour Force Survey Questionnaire* (cat. no. 6295.0) and *Information Paper: Questionnaires Used in the Labour Force Survey* (cat. no. 6232.0).

SURVEY SAMPLE REDESIGN

15 The Labour Force Survey sample was last reselected using information collected in the 2001 Census of Population and Housing.

16 The bulk of the new sample was phased in over the period November 2002 to June 2003, with one-eighth of this portion of the sample being introduced every month. The remainder of the sample (about 18% of the total), which covers less settled areas of Australia and non-private dwellings was rotated in full for New South Wales, Victoria, Tasmania, Northern Territory and Australian Capital Territory in November 2002, and for Queensland, South Australia and Western Australia in December 2002. Such a pattern of implementation means that any changes to labour force estimates due to differences between the two samples, or any other influences, were spread over the eight months.

17 For further details, see *Information Paper: Labour Force Survey Sample Design* (cat. no. 6269.0) and *Technical Report: New Labour Force Survey sample selections: analysis of the effect on estimates* in the October 2003 issue of *Australian Labour Market Statistics* (cat. no. 6105.0).

EXPLANATORY NOTES *continued*

RELIABILITY OF ESTIMATES

18 Two types of error are possible in an estimate based on a sample survey: sampling error and non-sampling error.

19 Sampling error occurs because a sample, rather than the entire population, is surveyed. One measure of the likely difference resulting from not including all dwellings in the survey is given by the standard error. There are about two chances in three that a sample estimate will differ by less than one standard error from the figure that would have been obtained if all dwellings had been included in the survey, and about nineteen chances in twenty that the difference will be less than two standard errors. Standard errors of estimates for the latest month and of estimates of movements since the previous month are shown on pages 27 and 28. Standard errors of other estimates and other movements may be determined by using information in *Information Paper: Labour Force Survey Standard Errors* (cat. no. 6298.0) which is available free on the ABS web site <<http://www.abs.gov.au>> (Papers & Articles).

20 Non-sampling error arises from inaccuracies in collecting, recording and processing the data. Every effort is made to minimise reporting error by the careful design of questionnaires, intensive training and supervision of interviewers, and efficient data processing procedures. Non-sampling error also arises because information cannot be obtained from all persons selected in the survey. The Labour Force Survey receives a high level of co-operation from individuals in selected dwellings, with the average response rate over the last year being 96%. See Glossary for definition of response rate.

SEASONAL ADJUSTMENT AND TREND ESTIMATION

21 Seasonal adjustment is a means of removing the estimated effects of normal seasonal variation from the series so that the effects of other influences on the series can be more clearly recognised. Seasonal adjustment does not aim to remove the irregular or non-seasonal influences which may be present in any particular month. This means that month-to-month movements of the seasonally adjusted estimates may not be reliable indicators of trend behaviour.

22 The Labour Force Survey uses the concurrent seasonal adjustment method to derive seasonal factors. Concurrent seasonal adjustment uses data up to the current month to estimate seasonal factors for the current and all previous months. This process can result in revisions each month to estimates for earlier periods. However, in most instances, the only noticeable revisions will be to the seasonally adjusted estimates for the previous month and one year prior to the current month.

23 Seasonal adjustment is able to remove the effect of events which occur at the same time in the survey every year. However, there are some events, like holidays, which are not always at the same time in the survey cycle or which are not at the same time across Australia. The effects of these types of events on LFS estimates cannot in all cases be removed, because the pattern of their effects cannot be determined. However, two events which are adjusted for in the seasonally adjusted series are the January interview start date and the timing of Easter.

24 For more information on concurrent seasonal adjustment and survey proximity to holiday periods, see *Information Paper: Forthcoming Changes to Labour Force Statistics* (cat. no. 6292.0).

25 While seasonal factors for the complete time series are estimated each month, they will continue to be reviewed annually at a more detailed level to take into account each additional year's original data. This annual review will not normally result in significant changes to published estimates. The review will be conducted in February each year with the results released in the February issue of this publication.

EXPLANATORY NOTES *continued*

SEASONAL ADJUSTMENT AND TREND ESTIMATION *continued*

26 The smoothing of seasonally adjusted series to produce 'trend' series reduces the impact of the irregular component of the seasonally adjusted series. These trend estimates are derived by applying a 13-term Henderson-weighted moving average to all months except the last six. The last six monthly trend estimates are obtained by applying surrogates of the Henderson average to the seasonally adjusted series. Trend estimates are used to analyse the underlying behaviour of a series over time.

27 While this smoothing technique enables estimates to be produced for the latest month, it does result in revisions in addition to those caused by the revision of seasonally adjusted estimates. Generally, revisions due to the use of surrogates of the Henderson average become smaller, and after three months have a negligible impact on the series.

28 Trend estimates are published for the Northern Territory in table 10 and for the Australian Capital Territory in table 11. Unadjusted series for the two territories have shown, historically, a high degree of variability, which can lead to considerable revisions to the seasonally adjusted estimates each month when seasonal factors are estimated. For this reason, seasonally adjusted estimates are not currently published for the two Territories. In addition, caution should be exercised in the interpretation of trend estimates for the two territories, particularly for the three most recent months, where revisions may be relatively large.

29 For further information, see *A Guide to Interpreting Time Series – Monitoring Trends* (cat. no. 1349.0) or contact the Assistant Director, Time Series Analysis on (02) 6252 6345.

RELATED PUBLICATIONS

30 Users may also wish to refer to *Australian Labour Market Statistics* (cat. no. 6105.0). This publication contains additional tables and a detailed list of related publications. For further information about this publication, please contact the Assistant Director, Labour Market Statistics on (02) 6252 7636.

31 ABS Information about the labour market can be found on the Labour theme page on the ABS web site <<http://www.abs.gov.au>> (Themes), or from ABS Bookshops.

32 Current publications and other products released by the ABS are listed in the *Catalogue of Publications and Products* (cat. no. 1101.0). The Catalogue is available from any ABS office or the ABS web site <<http://www.abs.gov.au>> (AusStats). The ABS also issues a daily Release Advice on the web site (AusStats) which details products to be released in the week ahead.

DATA AVAILABLE ON REQUEST

33 As well as the statistics included in this and related publications, the ABS may have other relevant data available. Inquiries should be made to Michael Johnson on (02) 6252 6525 or to any ABS office.

EFFECTS OF ROUNDING

34 Estimates have been rounded and discrepancies may occur between sums of the component items and totals.

35 Estimates of movement shown in this publication are obtained by taking the difference of unrounded estimates. The movement estimate is then rounded to one decimal place. Therefore where a discrepancy occurs between the reported movement and the difference of the rounded estimates, the reported movement will be more accurate.

SYMBOLS AND OTHER USAGES

36 SYMBOLS AND OTHER USAGES
pts percentage points

STANDARD ERRORS

STANDARD ERRORS

The estimates in this publication are based on information gained from the occupants of a sample survey of dwellings. Because the entire population is not surveyed, the published estimates are subject to sampling error. The most common way of quantifying such sampling error is to calculate the standard error for the published estimate or statistic. For more information, see paragraph 19 of the Explanatory Notes.

LEVEL ESTIMATES

To illustrate, let us say the published level estimate for employed persons aged 15–19 years is 700,000. The calculated standard error in this case is 9,800. The standard error is then used to interpret the level estimate of 700,000. For instance, the standard error of 9,800 indicates that:

- There are approximately two chances in three that the real value falls within the range 690,200 to 709,800 ($700,000 \pm 9,800$)
- There are approximately nineteen chances in twenty that the real value falls within the range 680,400 to 719,600 ($700,000 \pm 19,600$).

The real value in this case is the result we would obtain if we could enumerate the total population.

The following table shows the standard errors for this month's level estimates.

										AUSTRALIA		
											
										Males	Females	Persons

STANDARD ERRORS *continued*

MOVEMENT ESTIMATES

The following example illustrates how to use the standard error to interpret a movement estimate. Let us say that one month the published level estimate for females employed part time in Australia is 1,890,000; the next month the published level estimate is 1,900,000. The calculated standard error for the movement estimate is 10,600. The standard error is then used to interpret the published movement estimate of 10,000. For instance, the standard error of 10,600 indicates that:

- There are approximately two chances in three that the real movement between the two months falls within the range –600 to 20,600 (10,000 + or – 10,600)
- There are approximately nineteen chances in twenty that the real movement falls within the range –11,200 to 31,200 (10,000 + or – 21,200).

The following table shows the standard errors for this month's movement estimates.

										AUSTRALIA			
										Males	Females	Persons	
Aged 15 years and over													
Employed			NSW	Vic.	Qld	SA	WA	Tas.	NT	ACT			
Full time	'000	10.0	7.7	7.1	3.2	4.0	1.3	1.1	1.1		14.4	11.4	16.7
Part time	'000	7.3	5.7	5.1	2.4	3.0	1.0	0.7	0.7		7.7	10.7	12.1
Total	'000	11.2	8.6	8.0	3.6	4.5	1.4	1.2	1.2		15.2	14.1	18.8
Unemployed													
Looking for f/t work	'000	3.7	2.8	2.5	1.1	1.5	0.5	0.3	0.3		4.8	4.2	5.8
Looking for p/t work	'000	2.7	2.2	1.8	0.9	1.1	0.3	0.3	0.3		2.9	3.6	4.2
Total	'000	4.1	3.2	2.8	1.3	1.7	0.6	0.4	0.4		5.2	5.0	6.5
Labour force	'000	11.4	8.8	8.1	3.7	4.5	1.5	1.2	1.2		15.4	14.4	19.1
Not in labour force	'000	9.5	7.2	6.4	3.1	3.6	1.3	0.9	0.9		11.1	13.0	15.5
Unemployment rate													
Looking for f/t work	pts	0.1	0.2	0.2	0.2	0.2	0.3	0.4	0.2		0.1	0.2	0.1
Looking for p/t work	pts	0.3	0.3	0.3	0.4	0.3	0.5	1.3	0.6		0.3	0.2	0.1
Total	pts	0.1	0.1	0.1	0.2	0.2	0.2	0.4	0.2		0.1	0.1	0.1
Participation rate	pts	0.2	0.2	0.3	0.3	0.3	0.4	0.8	0.5		0.2	0.2	0.1
Aged 15–19 years													
Employed													
Full time	'000	3.2	2.2	2.4	1.0	1.5	0.4	0.3	0.3		4.4	3.5	5.1
Part time	'000	4.0	3.1	2.9	1.3	1.7	0.5	0.4	0.4		4.7	5.3	6.4
Total	'000	4.6	3.4	3.3	1.4	2.0	0.6	0.4	0.5		5.7	5.8	7.4
Unemployed													
Looking for f/t work	'000	2.0	1.4	1.4	0.7	0.9	0.3	0.1	0.2		2.4	2.3	3.0
Looking for p/t work	'000	1.8	1.7	1.3	0.7	0.8	0.2	0.2	0.2		2.3	2.4	3.0
Total	'000	2.4	2.0	1.7	0.9	1.0	0.3	0.2	0.3		3.0	3.0	3.8
Labour force	'000	4.8	3.6	3.5	1.6	2.1	0.6	0.5	0.5		6.1	6.1	7.8
Not in labour force	'000	4.4	3.3	2.8	1.3	1.6	0.6	0.4	0.4		5.4	5.2	6.8
Unemployment rate													
Looking for f/t work	pts	2.2	2.4	1.9	2.9	2.0	3.4	4.2	5.1		1.3	2.1	1.0
Looking for p/t work	pts	1.1	1.3	1.2	1.6	1.5	2.3	3.8	2.1		1.0	0.8	0.6
Total	pts	1.0	1.0	0.9	1.3	1.0	1.8	2.5	1.8		0.7	0.7	0.5
Participation rate	pts	1.0	1.1	1.3	1.5	1.4	1.8	3.2	2.2		0.8	0.9	0.6
Unemployment to population ratio – looking for f/t work		pts	0.4	0.4	0.5	0.7	0.6	0.8	1.0	0.9	0.3	0.3	0.2

GLOSSARY

Actively looking for work	Includes writing, telephoning or applying in person to an employer for work; answering an advertisement for a job; checking factory noticeboards or the touchscreens at the Centrelink offices; being registered with Centrelink as a jobseeker; checking or registering with any other employment agency; advertising or tendering for work; and contacting friends or relatives.
Attending full-time education	Persons aged 15–24 years enrolled at secondary or high school or enrolled as a full time student at a Technical and Further Education (TAFE) college, university, or other educational institution in the reference week.
Attending school	Persons aged 15–19 years enrolled at secondary or high school in the reference week.
Attending tertiary educational institution full time	Persons aged 15–24 years enrolled full time at a TAFE college, university, or other educational institution in the reference week, except those persons aged 15–19 years who were still attending school.
Civilian population aged 15 years and over	All usual residents of Australia aged 15 years and over except members of the permanent defence forces, certain diplomatic personnel of overseas governments customarily excluded from census and estimated population counts, overseas residents in Australia, and members of non-Australian defence forces (and their dependants) stationed in Australia.
Employed	<p>All persons aged 15 years and over who, during the reference week:</p> <ul style="list-style-type: none"> ■ worked for one hour or more for pay, profit, commission or payment in kind in a job or business, or on a farm (comprising employees, employers and own account workers); or ■ worked for one hour or more without pay in a family business or on a farm (i.e. contributing family workers); or ■ were employees who had a job but were not at work and were: <ul style="list-style-type: none"> ■ away from work for less than four weeks up to the end of the reference week; or ■ away from work for more than four weeks up to the end of the reference week and received pay for some or all of the four week period to the end of the reference week; or ■ away from work as a standard work or shift arrangement; or ■ on strike or locked out; or ■ on workers' compensation and expected to return to their job; or ■ were employers or own account workers, who had a job, business or farm, but were not at work.
Employment to population ratio	For any group, the number of employed persons expressed as a percentage of the civilian population in the same group.
Full-time workers	Employed persons who usually worked 35 hours or more a week (in all jobs) and those who, although usually working less than 35 hours a week, worked 35 hours or more during the reference week.
Labour force	For any group, persons who were employed or unemployed, as defined.
Labour force status	A classification of the civilian population aged 15 years and over into employed, unemployed or not in the labour force, as defined. The definitions conform closely to the international standard definitions adopted by the International Conferences of Labour Statisticians.
Not in labour force	Persons who were not in the categories employed or unemployed as defined.
Participation rate	For any group, the labour force expressed as a percentage of the civilian population aged 15 years and over in the same group.
Part-time workers	Employed persons who usually worked less than 35 hours a week (in all jobs) and either did so during the reference week, or were not at work in the reference week.

GLOSSARY *continued*

Response rate	The number of fully responding dwellings expressed as a percentage of the total number of dwellings excluding sample loss. Examples of sample loss include: dwellings where all persons are out of scope and/or coverage; vacant dwellings; dwellings under construction; dwellings converted to non-dwellings; derelict dwellings; and demolished dwellings.
Seasonally adjusted series	A time series of estimates with the estimated effects of normal seasonal variation removed. See Explanatory Notes 21 to 25 for more detail.
Trend series	A smoothed seasonally adjusted series of estimates. See Explanatory Notes 26 to 28 for more detail.
Unemployed	Persons aged 15 years and over who were not employed during the reference week, and: <ul style="list-style-type: none">■ had actively looked for full-time or part-time work at any time in the four weeks up to the end of the reference week and were available for work in the reference week; or■ were waiting to start a new job within four weeks from the end of the reference week and could have started in the reference week if the job had been available then.
Unemployed looking for full-time work	Unemployed persons who: <ul style="list-style-type: none">■ actively looked for full-time work; or■ were waiting to start a new full-time job.
Unemployed looking for part-time work	Unemployed persons who: <ul style="list-style-type: none">■ actively looked for part-time work only; or■ were waiting to start a new part-time job.
Unemployment rate	For any group, the number of unemployed persons expressed as a percentage of the labour force in the same group.
Unemployment to population ratio	For any group, the number of unemployed persons expressed as a percentage of the civilian population in the same group.

FOR MORE INFORMATION . . .

<i>INTERNET</i>	www.abs.gov.au the ABS web site is the best place to start for access to summary data from our latest publications, information about the ABS, advice about upcoming releases, our catalogue, and Australia Now—a statistical profile.
<i>LIBRARY</i>	A range of ABS publications is available from public and tertiary libraries Australia-wide. Contact your nearest library to determine whether it has the ABS statistics you require, or visit our web site for a list of libraries.
<i>CPI INFOLINE</i>	For current and historical Consumer Price Index data, call 1902 981 074 (call cost 77c per minute).
<i>DIAL-A-STATISTIC</i>	This service now provides only current Consumer Price Index statistics call 1900 986 400 (call cost 77c per minute).

INFORMATION SERVICE

Data already published that can be provided within five minutes will be free of charge. Our information consultants can also help you to access the full range of ABS information—ABS user pays services can be tailored to your needs, time frame and budget. Publications may be purchased. Specialists are on hand to help you with analytical or methodological advice.

<i>PHONE</i>	1300 135 070
<i>EMAIL</i>	client.services@abs.gov.au
<i>FAX</i>	1300 135 211
<i>POST</i>	Client Services, ABS, GPO Box 796, Sydney NSW 2001

FREE ACCESS TO PUBLICATIONS

All ABS publications can be downloaded free of charge from the ABS web site.

<i>WEB ADDRESS</i>	www.abs.gov.au
--------------------	-----------------------



2620200007050

ISSN 1448 2819

RRP \$24.00